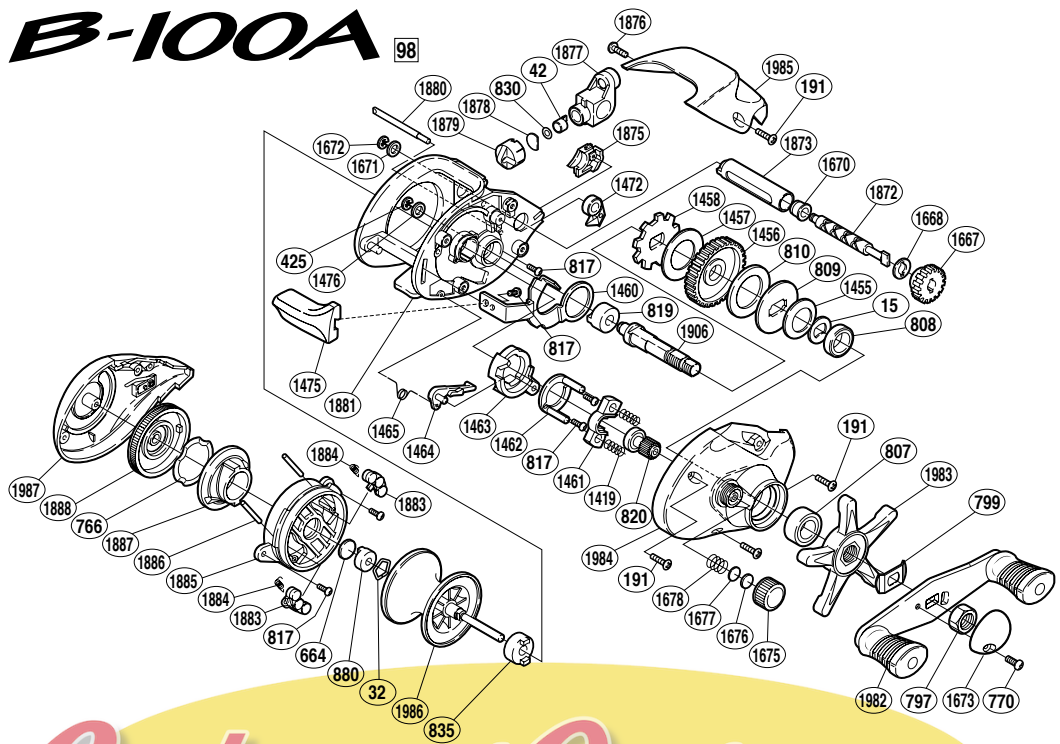


B-100A



RoulementCasting.com

BNT No.	PARTS NAMES	BNT No.	PARTS NAMES	BNT No.	PARTS NAMES
0015	Drag Spring Washer	1456	Drive Gear	1872	Worm Shaft
0032	Bearing Retainer	1457	Drive Shaft Washer (B)	1873	Level Wind Guard
0042	Line Guide Pawl	1458	Anti-Reverse Ratchet	1875	Drive Shaft Cover
0191	Multi-Purpose Screw	1460	Clutch Plate	1876	Thumb Rest Screw
0425	Drive Gear Retainer	1461	Yoke	1877	Line Guide
0664	Spacer (B)	1462	Clutch Cam Retainer	1878	Pawl Cap Spacer
0766	Dial Friction Washer	1463	Clutch Cam	1879	Pawl Cap
0770	Handle Nut Plate Screw	1464	Clutch Pawl	1880	Stabilizer Bar
0797	Handle Nut	1465	Clutch Pawl Spring	1881	One-Piece Frame
0799	Friction Washer	1472	Anti-Reverse Pawl	1883	Magnet Retainer
0807	Drive Shaft Bearing	1475	Quick-Fire II Clutch Bar	1884	Magnet Retainer Spring
0808	Friction Washer (B)	1476	Drive Shaft Washer (D)	1885	Dial Case
0809	Key Washer	1667	Worm Gear	1886	Magnet Retainer Shaft
0810	Drag Washer	1668	Worm Shaft Washer (A)	1887	Brake Cam
0817	Multi-Purpose Screw	1670	Worm Bushing	1888	Magnetic Control Dial
0819	Drive Shaft Bushing	1671	Worm Shaft Washer (B)	1906	Drive Shaft
0820	Pinion Gear	1672	"E" Lock	1982	Handle Assembly
0830	Spacer (optional)	1673	Handle Nut Plate	1983	Star Drag
0835	Spool Shaft Bushing (B)	1675	Cast Control Cap	1984	Right Side Plate
0880	Spool Shaft Bushing (C)	1676	Spool Tension Spacer (B)	1985	Thumb Rest
1419	Yoke Spring	1677	Spool Tension Spacer (A)	1986	Spool
1455	Drag Spring Washer	1678	Spool Tension Spring	1987	Left Side Plate