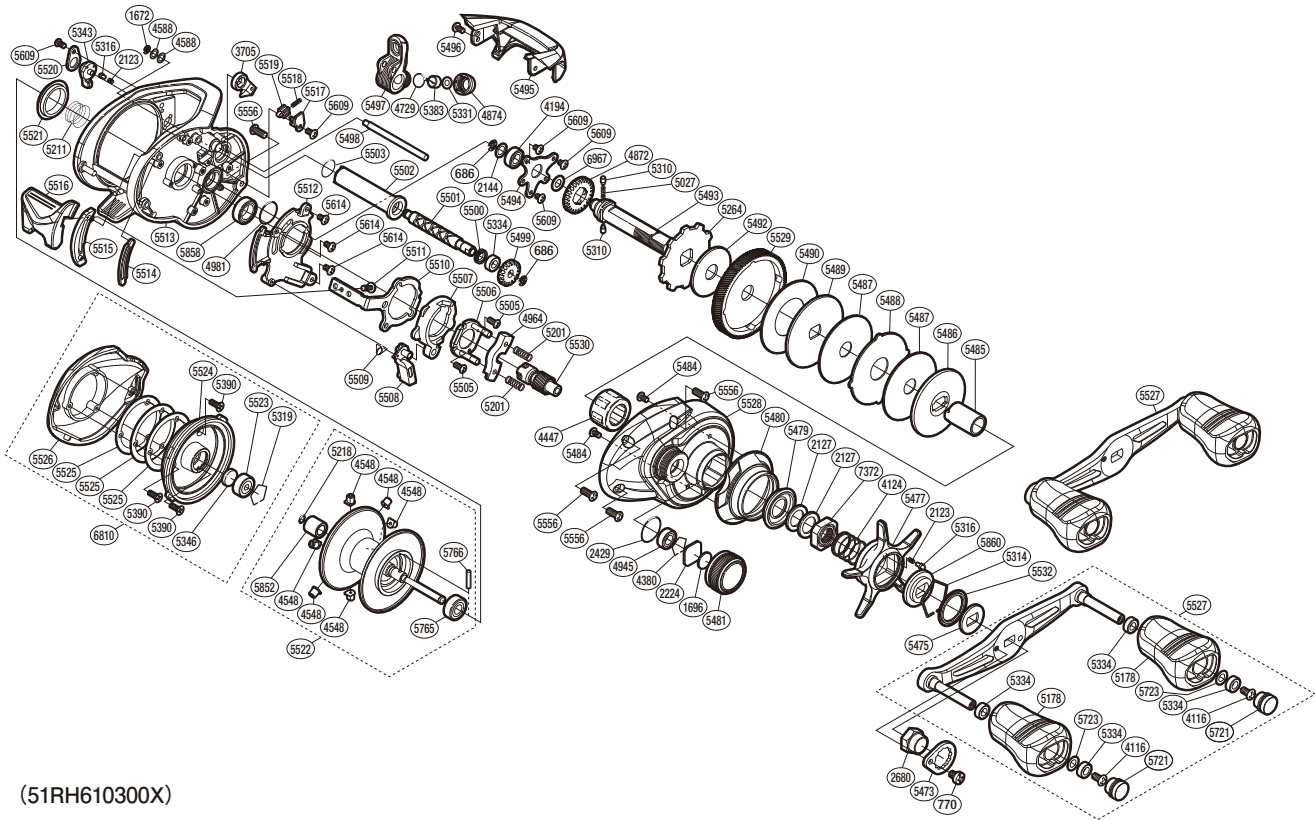


# SHIMANO

## TRAX

## TRX-300A



(51RH610300X)

| #    | Part No. | Description              | #    | Part No. | Description               | #    | Part No. | Description               |
|------|----------|--------------------------|------|----------|---------------------------|------|----------|---------------------------|
| 686  | 105NK    | E Lock                   | 5346 | 10EX5    | Spacer B                  | 5514 | 101J8    | Clutch Bar Support        |
| 770  | 10QG0    | Screw                    | 5383 | 10BHQ    | Line Guide Pawl           | 5515 | 101JA    | Clutch Bar Guide          |
| 1672 | 105NC    | E Lock                   | 5390 | 10LA4    | Screw                     | 5516 | 101J4    | Clutch Lever              |
| 1696 | 10896    | Cast Control Spacer (B)  | 5473 | 1024C    | Handle Nut Plate          | 5517 | 101J7    | Retention Spring Retainer |
| 2123 | 10BT2    | Click Spring             | 5475 | 10QVN    | Drive Shaft Shield        | 5518 | 101J6    | Clutch Retention Spring   |
| 2127 | 10J1N    | Star Drag Spacer         | 5477 | 10259    | Star Drag                 | 5519 | 10TZC    | Clutch Retention Pin      |
| 2144 | 10C47    | Drive Shaft Washer       | 5479 | 10255    | Roller Clutch Water Proof | 5520 | 101UL    | Cam Lever Retainer        |
| 2224 | 1085F    | Spool Tension Spacer (A) | 5480 | 10253    | Clutch Button Attachment  | 5521 | 1024L    | Frame Center Seal         |
| 2429 | 108WK    | O Ring                   | 5481 | 10252    | Cast Control Cap          | 5522 | 10SWE    | Spool Assembly            |
| 2680 | 10FT1    | Handle Nut               | 5484 | 10LA3    | Screw                     | 5523 | 105C2    | Ball Bearing              |
| 3705 | 10MW2    | Anti-Reverse Pawl        | 5485 | 10250    | Roller Clutch Inner Tube  | 5524 | 10SWA    | Dial Case                 |
| 4116 | 103E9    | Screw                    | 5486 | 1025E    | Key Washer                | 5525 | 1024K    | Washer                    |
| 4124 | 10A70    | Star Drag Spring         | 5487 | 1024D    | Drag Washer               | 5526 | 101UH    | Left Side Plate           |
| 4194 | 105BP    | Ball Bearing             | 5488 | 1024F    | Eared Washer              | 5527 | 10SWF    | Handle Assembly           |
| 4380 | 1057X    | Retainer                 | 5489 | 1024E    | Key Washer                | 5528 | 1024X    | Right Side Plate          |
| 4447 | 10F37    | Roller Clutch Bearing    | 5490 | 1025D    | Drag Washer               | 5529 | 1025B    | Drive Gear                |
| 4548 | 10CMP    | Brake Collar             | 5492 | 1025A    | Drag Washer               | 5530 | 1024Y    | Pinion Gear               |
| 4588 | 10FJZ    | Washer                   | 5493 | 10257    | Drive Shaft               | 5532 | 10QVP    | Star Drag Seal            |
| 4729 | 108WQ    | O Ring                   | 5494 | 1024G    | Drive Shaft Retainer      | 5556 | 10U0T    | Screw                     |
| 4872 | 10J47    | Idle Gear                | 5495 | 1024U    | Level Wind Protector      | 5609 | 10LCT    | Screw                     |
| 4874 | 10FJB    | Pawl Cap                 | 5496 | 10LCZ    | Screw                     | 5614 | 10SUT    | Screw                     |
| 4945 | 105BR    | Ball Bearing             | 5497 | 10SWD    | Line Guide                | 5721 | 1022Z    | Handle Knob Seal          |
| 4964 | 1046X    | Yoke                     | 5498 | 1024P    | Stabilizer Bar            | 5723 | 1003Z    | Washer                    |
| 4981 | 10LA8    | O Ring                   | 5499 | 1024Q    | Idle Gear                 | 5765 | 105CA    | Ball Bearing              |
| 5027 | 10JDZ    | Idle Gear Spring         | 5500 | 1024R    | Worm Shaft Seal           | 5766 | 10MD1    | Spool Clutch Pin          |
| 5178 | 10326    | Handle Knob              | 5501 | 1024M    | Worm Shaft                | 5852 | 101J1    | Spool Shaft Bushing       |
| 5201 | 104BC    | Yoke Spring              | 5502 | 1024N    | Level Wind Guard          | 5858 | 105BT    | Ball Bearing              |
| 5211 | 10EZE    | Bearing Pressure Spring  | 5503 | 101GT    | O Ring                    | 5860 | 10J26    | Star Drag Click Plate     |
| 5218 | 10EZ7    | O Ring                   | 5505 | 10LVJ    | Screw                     | 6810 | 10T4K    | Left Side Plate Assembly  |
| 5264 | 10D73    | Anti-Reverse Ratchet     | 5506 | 10QVM    | Clutch Cam Retainer       | 6967 | 10GR7    | Washer                    |
| 5310 | 10HJG    | Idle Gear Pin            | 5507 | 10254    | Clutch Cam                | 7372 | 10A3X    | Star Drag Nut             |
| 5314 | 10KXW    | Click Plate Retainer     | 5508 | 101J2    | Clutch Pawl               |      |          |                           |
| 5316 | 10MFC    | Click Pin                | 5509 | 101J3    | Clutch Pawl Spring        |      |          |                           |
| 5319 | 1054D    | Bearing Retainer         | 5510 | 101J9    | Clutch Plate              |      |          |                           |
| 5331 | 104TX    | Spacer                   | 5511 | 10LCL    | Screw                     |      |          |                           |
| 5334 | 10PXZ    | Bushing                  | 5512 | 10251    | Clutch Guard              |      |          |                           |
| 5343 | 1019B    | Side Plate Cam Lever     | 5513 | 10SWC    | Frame                     |      |          |                           |

Please note that the number of adjusting washers may not be the same as shown in the exploded views.  
(Adjustment will vary with each individual product.)