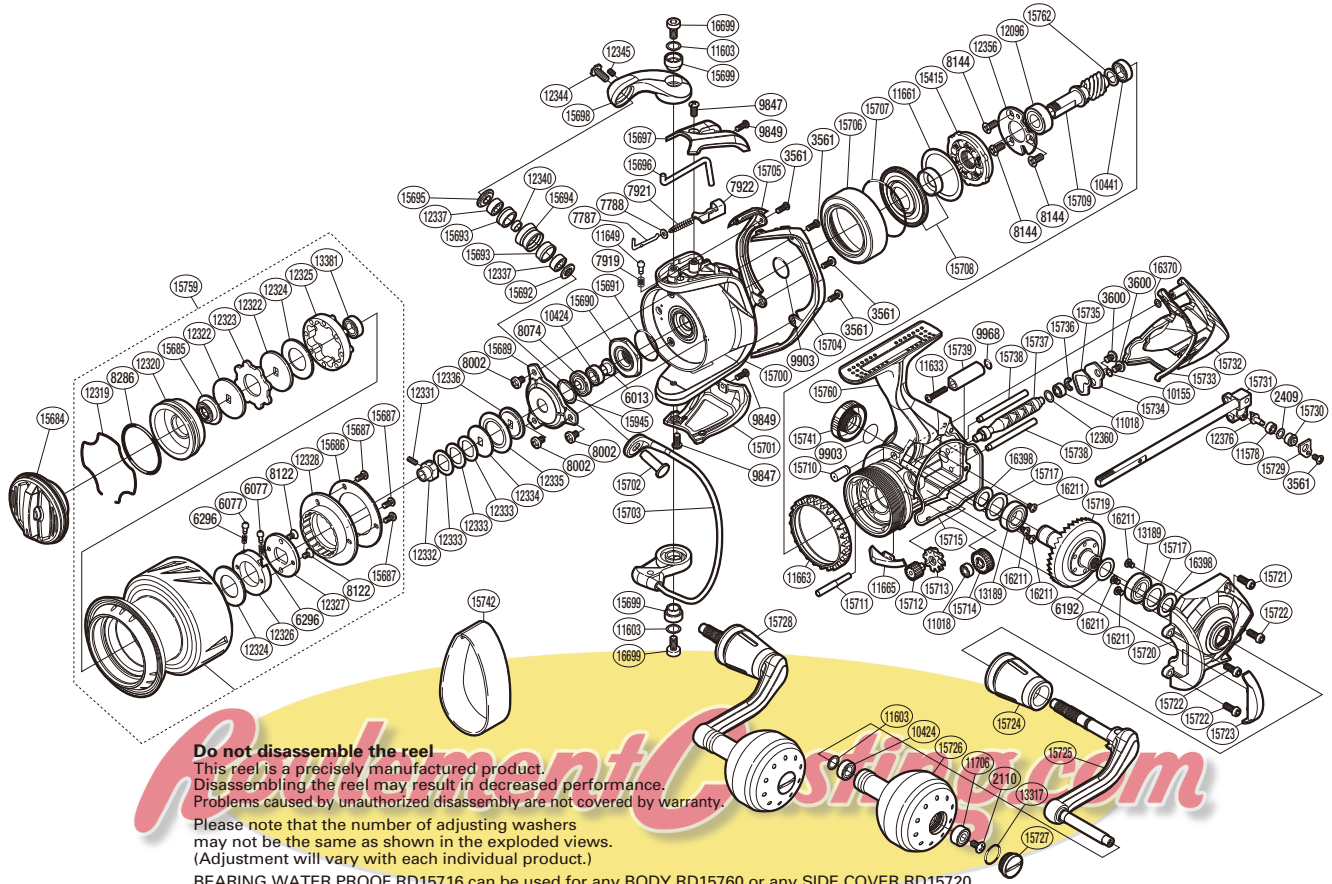


SHIMANO

STELLA  A-RB

STLSW-6000HG



Do not disassemble the reel

This reel is a precisely manufactured product. Disassembling the reel may result in decreased performance. Problems caused by unauthorized disassembly are not covered by warranty.

Please note that the number of adjusting washers may not be the same as shown in the exploded views. (Adjustment will vary with each individual product.)

BEARING WATER PROOF RD15716 can be used for any BODY RD15760 or any SIDE COVER RD15720. (51SE25M062X) But BEARING WATER PROOF RD16398 can be used only for BODY or SIDE COVER with a stamped mark.

Part No.	Description	Part No.	Description	Part No.	Description
RD 2110	Screw	RD12332	Bearing Bushing	RD15714	Idle Gear **
RD 2409	Spacer ***	RD12333	Spool Washer	RD15715	Body Seal
RD 3561	Screw	RD12334	Spool Support B	RD15717	Washer *****
RD 3600	Screw	RD12335	Bearing Water Proof	RD15719	Drive Gear **
RD 6013	Main Shaft Spacer	RD12336	Spool Support	RD15720	Side Cover
RD 6077	Click Pin *****	RD12337	Ball Bearing *	RD15721	Screw
RD 6192	Washer **/*****	RD12340	Bearing Spacer *	RD15722	Screw
RD 6296	Click Spring *****	RD12344	Screw *	RD15723	Friction Ring Spacer
RD 7787	Bail Spring Guide A *****	RD12345	Set Screw *	RD15724	Handle Shaft Cover
RD 7788	Spring Guide A Support ****	RD12356	Bearing Retainer	RD15725	Handle Shank Assembly
RD 7919	Click Spring ****	RD12360	Washer ***	RD15726	Handle Knob
RD 7921	Bail Spring ****	RD12376	Oscillating Pawl ***	RD15727	Handle Knob Seal
RD 7922	Bail Spring Seat ****	RD13189	Ball Bearing *****	RD15728	Handle Assembly
RD 8002	Screw	RD13317	O Ring	RD15729	Oscillating Pawl Cover
RD 8074	Bearing Water Proof	RD13381	Ball Bearing	RD15730	Oscillating Slider Bushing ***
RD 8122	Screw	RD15415	Roller Clutch Assembly	RD15731	Main Shaft Assembly
RD 8144	Screw	RD15684	Drag Knob	RD15732	Rear Protector
RD 8286	O Ring	RD15685	Bearing Support	RD15733	Rear Shield
RD 9847	Screw	RD15686	Drag Cover I.D. Plate	RD15734	Worm Shaft Retainer
RD 9849	Screw	RD15687	Screw	RD15735	Worm Shaft Retainer Washer
RD 9903	O Ring	RD15688	Rotor Nut Lock Plate	RD15736	Worm Shaft Ring ***
RD 9968	O Ring	RD15690	Rotor Nut	RD15737	Worm Shaft ***
RD10155	Spacer	RD15691	O Ring	RD15738	Oscillating Guide
RD10424	Ball Bearing	RD15692	Line Roller Plate *	RD15739	Rear Protector Collar
RD10441	Ball Bearing *****	RD15693	Line Roller Bushing *	RD15741	Handle Screw Cap
RD11018	Ball Bearing ***	RD15694	Line Roller *	RD15759	Spool Assembly
RD11578	Ball Bearing ***	RD15695	Line Roller Plate B *	RD15760	Body
RD11603	Washer ****	RD15696	Bail Trip Lever	RD15762	Pinion Gear Collar *****
RD11633	Screw	RD15697	Bail Spring Cover	RD15945	Washer
RD11649	Click Pin ****	RD15698	Bail Arm	RD16211	Screw
RD11661	Roller Clutch Outer Spacer	RD15699	Screw Collar ****	RD16370	Spacer
RD11663	Friction Ring	RD15700	Rotor	RD16398	Bearing Water Proof *****
RD11665	Bail Trip Strike	RD15701	Bail Hold Support Guard	RD16699	Screw *****
RD11706	Ball Bearing	RD15702	Line Roller Support *		
RD12096	Ball Bearing *****	RD15703	Bail Assembly	RD15742	Line Band S (accessory)
RD12319	Drag Washers Retainer	RD15704	Rotor Guard A	RD16003	SSRO-01 Oil (accessory)
RD12320	Thrust Bushing	RD15705	Rotor Guard B		
RD12322	Key Washer	RD15706	Roller Clutch Cover		
RD12323	Eared Washer	RD15707	O Ring		
RD12324	Drag Washer	RD15708	Roller Clutch Water Proof Set	PK 0164	Line Roller Set *
RD12325	Spool Bushing	RD15709	Pinion Gear **	PK 0165	Gear Set **
RD12326	Drag Click Holder	RD15710	Body Flange Seal	PK 0166	Oscillation Set ***
RD12327	Drag Click Holder Cover	RD15711	Idle Gear B Shaft	PK 0167	Bail Spring Set *****
RD12328	Drag Cover	RD15712	Idle Gear B S **	PK 0230	Bearing Set *****
RD12331	Set Screw	RD15713	Idle Gear B L **	PK 0169	Drag Clicker Set *****