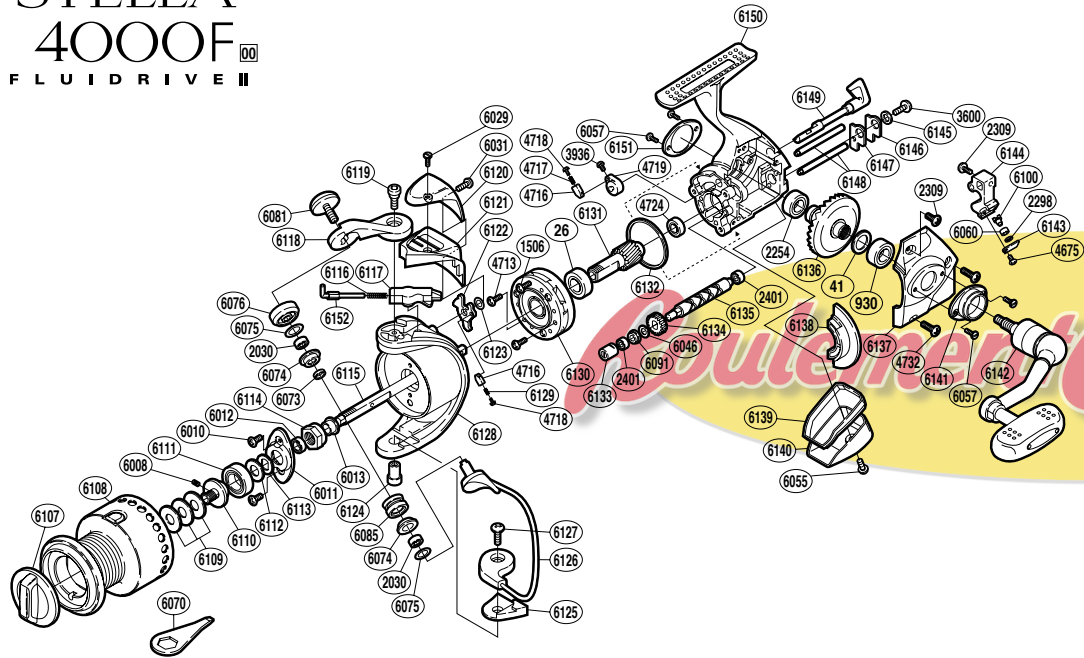


# STELLA

## 4000F<sup>00</sup>

FLUIDRIVE II



RD No.	PARTS NAMES	RD No.	PARTS NAMES	RD No.	PARTS NAMES
0026	Ball Bearing	6060	Oscillating Slider Bushing	6126	Bail Assembly
0041	Drive Gear Washer	6070	Wrench (accessory)	6127	Bail Hold Support Screw
0930	Ball Bearing	6073	Bearing Spacer	6128	Rotor
1506	Clutch Cover Screw	6074	Line Roller Bushing	6129	Lever Spring
2030	Ball Bearing	6075	Roller Bearing Seal	6130	Roller Clutch Assembly
2254	Ball Bearing	6076	Line Roller Washer	6131	Pinion Gear
2298	Spacer	6081	Line Roller Screw	6132	Friction Ring
2309	Multi-Purpose Screw	6085	Line Roller	6133	Worm Bushing
2401	Ball Bearing	6091	Idle Gear Spacer	6134	Idle Gear
3600	Worm Shaft Retainer Screw	6100	Oscillating Pawl	6135	Worm Shaft
3936	Anti-Reverse Cam Screw	6107	Drag Knob	6136	Drive Gear
4675	Oscillating Pawl Cover Screw	6108	Spool Assembly	6137	Side Cover
4713	Roller Clutch Screw	6109	Spool Washer	6138	Side Cover Flange
4716	Lever Spring Guide (B)	6110	Bearing Bushing	6139	Rear Shield
4717	Lever Spring	6111	Ball Bearing	6140	Rear Protector
4718	Lever Spring Guide (A)	6112	Spool Support Washer	6141	Handle Screw Cap (A)
4719	Anti-Reverse Cam	6113	Spool Support	6142	Handle Assembly
4724	Ball Bearing	6114	Rotor Nut	6143	Oscillating Pawl Cover
4732	Side Cover Screw	6115	Main Shaft	6144	Oscillating Slider
6008	Set Screw	6116	Bail Spring	6145	Worm Shaft Retainer Spacer
6010	Nut Lock Screw	6117	Bail Spring Guide (B)	6146	Worm Shaft Retainer
6011	Rotor Nut Lock Plate	6118	Bail Arm	6147	Worm Shaft Retainer Washer
6012	Ball Bearing	6119	Bail Arm Screw	6148	Oscillating Guide
6013	Main Shaft Spacer	6120	Rotor Protector	6149	Anti-Reverse Lever
6029	Protector Screw (A)	6121	Bail Spring Cover	6150	Body
6031	Protector Screw (B)	6122	Bail Trip Lever	6151	Handle Screw Cap (B)
6046	Idle Gear Washer	6123	Trip Lever Spacer	6152	Bail Spring Guide (A)
6055	Rear Protector Screw	6124	Bail Hold Support Shaft		
6057	Cap Screw	6125	Bail Hold Support Spacer		