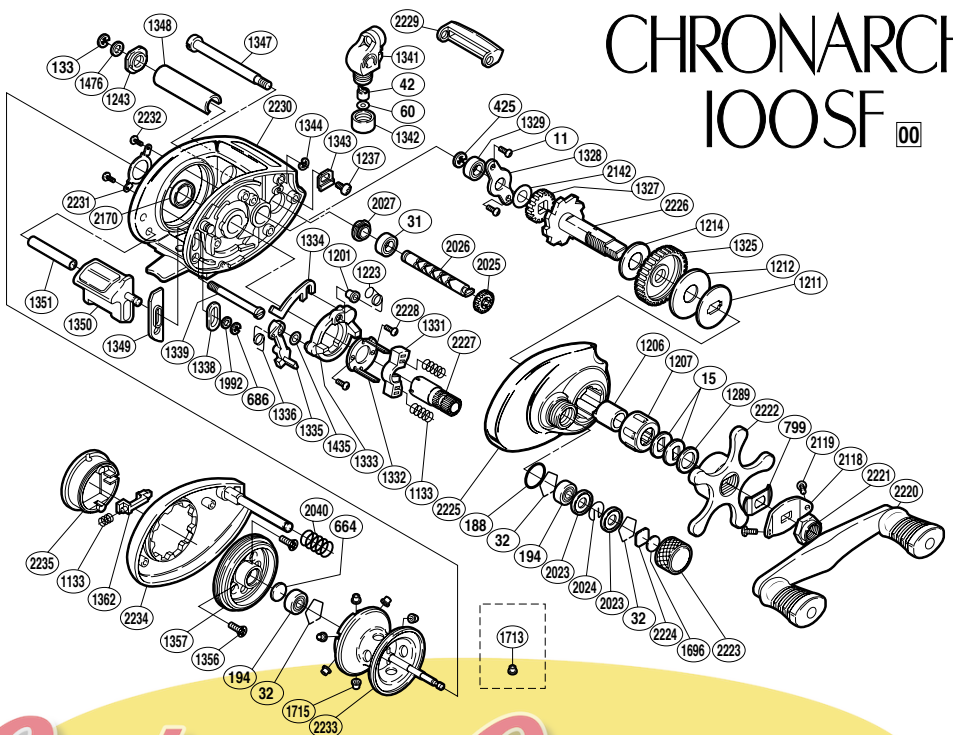


CHRONARCH 100SF 00



RoulementCasting.com

BNT No.	PARTS NAMES	BNT No.	PARTS NAMES	BNT No.	PARTS NAMES
0011	Drive Shaft Retainer Screw	1329	Ball Bearing	2024	Spool Shaft Clip
0015	Drag Spring Washer	1331	Yoke	2025	Idle Gear (C)
0031	Ball Bearing	1332	Clutch Cam Retainer	2026	Worm Shaft
0032	Bearing Retainer	1333	Clutch Cam	2027	Worm Bushing (A)
0042	Line Guide Pawl	1334	Clutch Plate	2040	Left Side Plate Spring
0060	Spacer (optional)	1335	Clutch Pawl	2118	Handle Nut Plate
0133	Worm Shaft Retainer	1336	Clutch Pawl Spring	2119	Nut Plate Screw
0188	"O" Ring	1338	Clutch Bar Guide (A)	2142	Idle Gear (A) Spacer
0194	Ball Bearing	1339	Clutch Bar Bolt	2170	Ball Bearing
0425	"E" Lock	1341	Line Guide	2220	Handle Assembly
0664	Spacer (B)	1342	Pawl Cap	2221	Handle Nut
0686	"E" Lock	1343	Worm Bearing (A) Retainer	2222	Star Drag
0799	Friction Washer	1344	"C" Lock	2223	Cast Control Cap
1133	Yoke / Turnkey Pawl Spring	1347	Level Wind Guide	2224	Spool Tension Spacer (A)
1201	Retractor Spring Collar	1348	Level Wind Guard	2225	Right Side Plate
1206	Roller Clutch Inner Tube	1349	Clutch Bar Guide (B)	2226	Drive Shaft
1207	Roller Clutch Bearing	1350	Quick-Fire II Clutch Bar	2227	Pinion Gear
1211	Key Washer	1351	Clutch Bar Support	2228	Clutch Cam Screw
1212	Drag Washer (C)	1356	Brake Case Retainer Screw	2229	Level Wind Protector
1214	Drag Washer (A)	1357	Brake Case	2230	One-Piece Frame
1223	Retractor Spring	1362	Turnkey Pawl	2231	Bearing Retainer
1237	Worm Bearing (A) Retainer Screw	1435	Clutch Pawl Spacer	2232	Bearing Retainer Screw
1243	Worm Bushing (B)	1476	Worm Shaft Spacer	2233	Spool Assembly
1289	Star Drag Spacer	1696	Cast Control Spacer (B)	2234	Left Side Plate
1325	Drive Gear	1715	Brake Collar (red)	2235	Turnkey Dial
1327	Idle Gear	1992	Spacer (B)		
1328	Drive Shaft Retainer	2023	Spool Shaft Clip Holder	1713	Brake Collar (green)