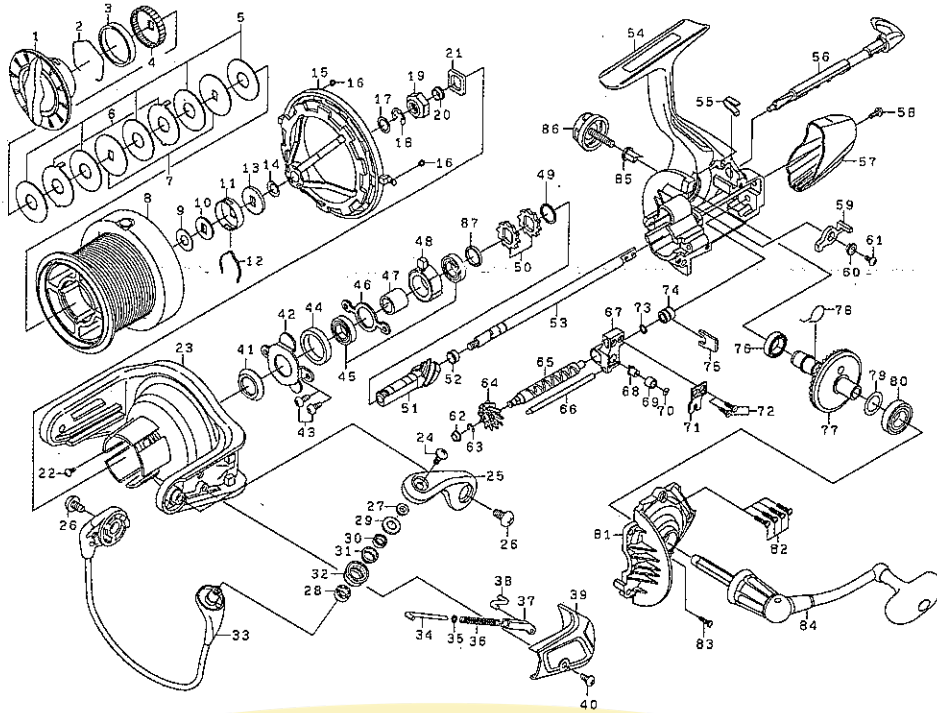


SPINNING REEL WINDCAST X4500/X5000/X5000LD/X5500



Key No.	Parts No.	Parts Name	Désignation des pièces	Key No.	Parts No.	Parts Name	Désignation des pièces
1	6H433501	Drag Knob	Bouton de réglage du frein	53	6H355901	Main Shaft	Axe principale
2	6F884001	Drag Washer Retainer	Clips de rondelle de frein	54	6H433101	Body	Bâti
3	6G512601	Collar (A)	Collier (A)	55	6H102301	Anti-Reverse Cam Spring	Ressort de came du cliquet anti-retour
4	6G421401	Drag Ratchet	Rochet de frein	56	6H354503	Anti-Reverse Lever	Commande de l'anti-retour
5	6F755503	Drag Washer	Rondelle de frein	57	6H356502	Rear Cover	Couvercle arrière
6	6F756701	Eared Washer	Rondelle à oreilles	58	6E364202	Screw (F)	Vis (F)
7	6F881702	Key Washer	Rondelle fixe	59	6H354301	Anti-Reverse Pawl	Cliquet anti-retour
2-8	6H433401	Spool Assembly	Bobine complète	60	6H354401	Collar (H)	Collier (H)
9	6E399200	Washer (A)	Rondelle (A)	61	6B008601	Screw (G)	Vis (G)
10	6F043401	Washer (B)	Rondelle (B)	62	6H354701	Collar (I)	Collier (I)
11	6F204001	Cap	Chapeau	63	63205901	Worm Shaft Retainer (A)	Clips de vis double filet (A)
12	6F704902	Spool Click Leaf Spring	Ressort de réglage de bobine	64	6H409001	Worm Shaft Gear	Roue de vis double filet
13	6E267501	Washer (C)	Rondelle (C)	65	6H359901	Worm Shaft	Vis double filet
14	6G878201	Spring Washer	Rondelle ressort	66	6H354901	Stabilizer Bar	Entretoise
15	6H357502	Line Guard	Protège-ligne	67	6H355601	Oscillating Slider	Coulisse
16	6B853101	"O" Ring	Anneau torique	68	6H355701	Oscillating Pawl	Pilote d'oscillation
17	6G408301	Washer (D)	Rondelle (D)	69	6H355801	Collar (J)	Collier (J)
18	63201611	Retainer	Clips	70	63750800	Washer (G)	Rondelle (G)
19	6H050001	Rotor Nut	Ecrin de cloche	71	6H356001	Oscillating Slider Cover	Couvercle de coulisse
20	6H357401	Collar (B)	Collier (B)	72	63521505	Screw (H)	Vis (H)
21	6G392201	Plate	Plaque	73	6B411700	Washer (H)	Rondelle (H)
22	6G171402	Screw (A)	Vis (A)	74	6H354801	Collar (K)	Collier (K)
23	6H356603	Rotor	Cloche	75	6H355001	Worm Shaft Retainer (B)	Clips de vis double filet (B)
24	6E454007	Screw (B)	Vis (B)	76	6G156803	Ball Bearing (C)	Roulement à billes (C)
25	6H356903	Bail Arm	Bras de pick-up	77	6H408701	Drive Gear	Roue de commande
26	6G455601	Screw (C)	Vis (C)	78	6H356201	Anti-Reverse Pawl Spring	Ressort du cliquet anti-retour
27	6G740701	Collar (C)	Collier (C)	79	6B270700	Washer (I)	Rondelle (I)
28	6H194701	Collar (D)	Collier (D)	80	6G472501	Ball Bearing (D)	Roulement à billes (D)
29	6G740501	Packing (A)	Emballage (A)	81	6H433201	Side Cover	Couvercle
30	6G370905	Ball Bearing (A)	Roulement à billes (A)	82	6G410701	Screw (I)	Vis (I)
31	6G740601	Collar (E)	Collier (E)	83	6B008601	Screw (J)	Vis (J)
32	6G740402	Line Roller	Galet de pick-up	84	6H395801	Handle Assembly	Manivelle
33	6H395701	Bail Assembly	Ensemble Arceau du pick-up	85	6F409001	Collar (L)	Collier (L)
34	6H105602	Bail Spring Shaft	Axe de ressort de pick-up	86	6H477502	Handle Screw	Vis de manivelle
35	6E313901	Washer (E)	Rondelle (E)	87	6G176802	Collar (M)	Collier (M)
36	6H105801	Bail Spring	Ressort de pick-up	2-8	6H433401	Spool Assembly (Extra Spool)	Bobine complète (Bobine extra)
37	6H356801	Bail Spring Holder	Support ressort de pick-up				
38	6H356701	Shaft	Axe				
39	6H357002	Cover	Couvercle				
40	6G205101	Screw (D)	Vis (D)				
41	6H446101	Packing (B)	Emballage (B)				
42	6H355501	Bearing Retainer	Rondelle de retenue du roulement à billes				
43	6L001801	Screw (E)	Vis (E)				
44	6H355401	Collar (F)	Collier (F)				
45	6B546002	Ball Bearing (B)	Roulement à billes (B)				
46	6H355301	Clutch Cam Retainer	Verrou de came d'embrayage				
47	6H355201	Spacing Sleeve	Manchon				
48	6G845601	Roller Clutch	Roulement à aiguilles				
49	6E339701	Washer (F)	Rondelle (F)				
50	6G176702	Ratchet	Rochet				
51	6H408901	Pinion Gear	Pignon				
52	6G400401	Collar (G)	Collier (G)				

WINDCAST X5000 Special Parts			
Key No.	Parts No.	Parts Name	Désignation des pièces
2-8	6H433701	Spool Assembly	Bobine complète
2-8	6H433701	Spool Assembly (Extra Spool)	Bobine complète (Bobine extra)

WINDCAST X5000LD Special Parts			
Key No.	Parts No.	Parts Name	Désignation des pièces
2-8	6H436801	Spool Assembly	Bobine complète
2-8	6H436801	Spool Assembly (Extra Spool)	Bobine complète (Bobine extra)

WINDCAST X5500 Special Parts			
Key No.	Parts No.	Parts Name	Désignation des pièces
2-8	6H433901	Spool Assembly	Bobine complète
2-8	6H433901	Spool Assembly (Extra Spool)	Bobine complète (Bobine extra)