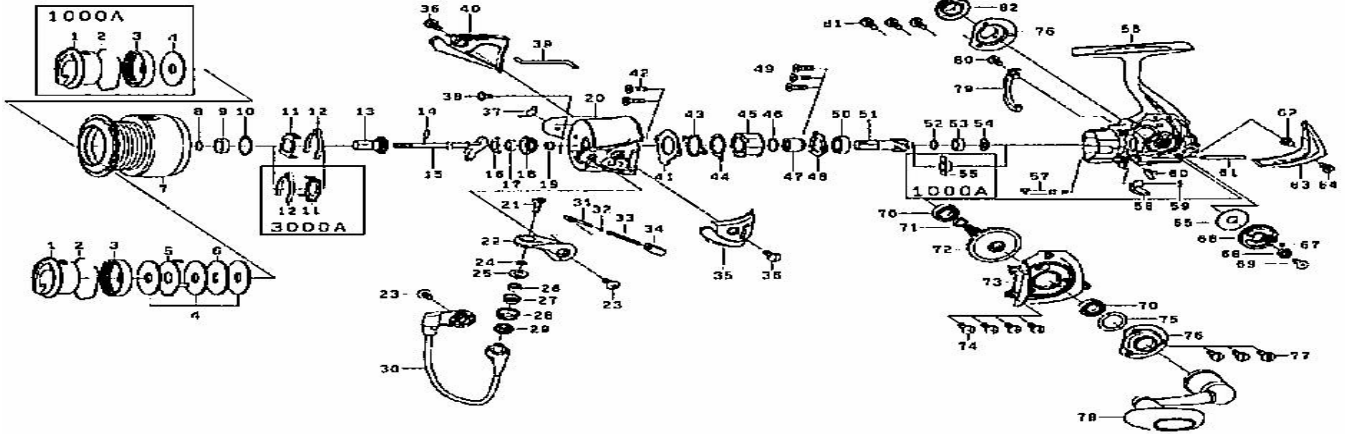


Please order by parts number, not key number
Veuillez indiquer le numéro de la pièce (Non "Key" No.)



SPINNING REEL TD FUEGO 1000A/1500A/2000A/2500A/3000A



Key No.	TDFUEGO 1000A Parts No.	Parts Name	TD FUEGO 1500A Parts No.	TD FUEGO 2000A Parts No.	TD FUEGO 2500A Parts No.	TD FUEGO 3000A Parts No.
1	H01-6401	Drag knob	H01-6402	H01-6402	H00-0001	H00-0001
2	F74-2501	Drag Washer Retainer	F74-2501	F74-2501	F71-0001	F71-0001
3	F90-8701	Drag Knob Click Plate	F90-8701	F90-8701	F89-5304	F89-5304
4	F73-1901	Drag Washer	F63-5001	F63-5001	F69-11001	F69-11001
5	—	Eared washer	F63-5201	F63-5201	F62-7301	F62-7301
6	—	Key Washer	F63-5101	F63-5101	F62-7201	F62-7201
2-7	H16-8201	Spool Assembly	H16-9701	H17-0101	H17-0501	H17-0901
8	G47-2401	Collar Retainer	G47-2401	G47-2401	G47-2401	G47-2401
9	G09-5802	Collar (A)	G09-5802	G09-5802	G09-5802	G09-5802
10	F62-5500	Washer (A)	F62-5500	F62-5500	F62-5500	F62-5500
11	G69-3901	Click Leaf Spring Holder	G69-3901	G69-3901	G69-3901	G87-2101
12	H07-9601	Spool Leaf Spring	H07-9601	H07-9601	H07-9601	H11-4301
13	G68-7402	Spool Metal	G68-7402	G68-7402	G68-7402	G87-2002
14	G37-5001	Pin	G37-5001	G37-5001	G37-5001	G37-5001
15	G89-8401	Main Shaft	H03-7801	H03-7801	H08-0301	H08-0301
16	G47-1501	Bearing Retainer (A)	G47-1501	G47-1501	G99-9201	G99-9201
17	G46-6201	Ball Bearing (A)	G46-6201	G46-6201	G46-6201	G46-6201
18	G90-0502	Rotor	G90-0502	G90-0502	G99-9101	G99-9101
19	H03-8101	Collar (B)	H03-8101	H03-8101	G68-7301	G87-1901
20	G90-0002	Screw (A)	G90-0002	G90-0002	G99-8201	G93-0701
21	G68-7202	Screw (A)	G68-7202	G68-7202	G68-7202	G68-7202
22	G68-5603	Ball Arm	G68-5603	G68-5603	G99-8301	G76-6505
23	F21-2201	Screw (B)	F21-2201	F21-2201	G99-8401	G99-8401
24	G68-7101	Collar (C)	G68-7101	G68-7101	—	—
25	G68-7001	Packing	G68-7001	G68-7001	G68-7001	G68-7001
26	G68-6901	Ball Bearing (B)	G68-6901	G68-6901	G68-6901	G68-6901
27	G99-8901	Collar (D)	G99-8901	G99-8901	G99-8901	G99-8901
28	G68-6701	Line Roller	G68-6701	G68-6701	G68-6701	G68-6701
29	G99-9001	Collar (E)	G99-9001	G99-9001	G99-9001	G99-9001
30	H01-5701	Bail Assembly	H01-5701	H01-5701	H09-8601	H03-0901
31	H11-4201	Ball Spring Shaft	H11-4201	H11-4201	H11-4201	G47-1803
32	G68-5401	Washer (B)	G68-5401	G68-5401	G68-5401	E31-3901
33	G68-5301	Ball Spring	G68-5301	G68-5301	G95-1601	G94-4501
34	G95-1901	Bail Spring Holder	G95-1901	G95-1901	H00-1201	H03-0801
35	G30-0102	Cover (A)	G30-0102	G90-0102	G68-5703	G87-1202
36	G99-7901	Screw (C)	G99-7901	G99-7901	G27-0801	G27-0801
37	H11-8601	Bail Trip Lever Spring	H11-8601	H11-8601	H11-8601	H11-8601
38	H02-2701	Screw (D)	H02-2701	H02-2701	G93-9301	G93-9301
39	H14-4201	Bail Trip Lever	H14-4201	H14-4201	G99-8501	H11-8701
40	G90-0402	Cover (B)	G90-0402	G90-0402	H18-9601	G87-1802
41	G89-9002	Roller Clutch Retainer	G89-9002	G89-9002	G89-9002	G88-4102
42	H00-5701	Screw (E)	H00-5701	H00-5701	H00-5701	H00-5701
43	G89-8902	Clutch Cam Retainer	G89-8902	G89-8902	G89-8902	G68-4002
44	G89-8801	Clutch Cam	G89-8801	G89-8801	G89-8801	G68-3901
45	G22-0601	Roller Clutch	G22-0601	G22-0601	G22-0601	G22-0601
46	G26-4701	Washer (C)	G26-4701	G26-4701	G26-4701	—
47	G46-7501	Spacing Sleeve	G46-7501	G46-7501	G46-7501	G46-7501
48	G99-7201	Bearing Retainer (B)	G99-7201	G99-7201	G99-7201	H03-7701
49	G99-7301	Screw (F)	G99-7301	G99-7301	G99-7301	G99-7301
50	G46-7301	Ball Bearing (C)	G46-7301	G46-7301	G46-7301	G53-5101
51	G89-9101	Pinion Gear	H03-8001	H03-8001	G68-4201	G50-7701
52	—	Washer (D)	F09-6402	F09-6402	F09-6402	G87-0101
53	—	Ball Bearing (D)	G53-8003	G53-8003	G53-8003	G46-7101
54	—	Collar (F)	G99-7101	G99-7101	G99-7101	H03-0301
55	G89-8701	Collar (G)	—	—	—	—
56	H01-5302	Body	G99-6602	G99-6602	G99-6602	H03-0002
57	H07-8901	Anti-Reverse Cam	H07-8901	H07-8901	H07-8901	H07-9001
58	G86-9102	Anti-Reverse Lever	G86-9102	G86-9102	G86-9102	G86-9102
59	B33-9801	Retainer	B33-9801	B33-9801	B33-9801	B33-9801
60	H11-4102	Anti-Reverse Cam Spring	H11-4101	H11-4101	H11-4101	H11-4101
61	G68-8901	Stabilizer Bar	G68-8901	G68-8901	G68-8901	G87-0701
62	G05-2401	Collar (I)	G99-8001	G99-8001	G99-8001	G99-8001
63	H01-5601	Rear Cover	G99-8101	G99-8101	G99-8101	H03-0601
64	H16-9501	Screw (G)	G20-5101	G20-5101	G20-5101	G20-5101
65	H19-7401	Washer (E)	G99-6901	G99-6901	G99-6901	H03-0201
66	H07-9701	Oscillating ear	H07-9801	H07-9801	H07-9901	H08-0101
67	G89-8301	"O" Ring	G68-3301	G68-3301	G68-3301	G86-9601
68	G46-9001	Ball Bearing (E)	G46-9002	G46-9002	G46-9002	G46-9002
69	G99-7001	Screw (H)	G99-7001	G99-7001	G99-7001	G99-7001
70	G46-7302	Ball Bearing (F)	G46-7302	G46-7302	G46-7302	G46-7302
71	G73-6201	Ring	G73-6201	G73-6201	G73-6201	G64-8401
72	G89-9201	Drive Gear	G68-4301	G68-4301	G68-4301	G87-0301
73	H05-2301	Slide Cover	G99-7601	G99-7601	G99-7601	H03-0501
74	G99-7701	Screw (I)	G99-7701	G99-7701	G99-7701	G99-7701
75	B27-0700	Washer (F)	G46-8000	G46-8000	G46-8000	G46-8000
76	H01-5502	Bearing Retainer (C)	G99-7402	G99-7402	G99-7402	H03-0402
77	F62-3305	Screw (J)	F62-3305	F62-3305	F62-3305	F62-3305
78	H16-8001	Handle Assembly	H16-9901	H16-9901	H17-0301	H17-0701
79	G99-7801	Brake Shoe	G99-7801	G99-7801	G99-7801	G99-7801
80	G99-7901	Screw (K)	G99-7901	G99-7901	G99-7901	G99-7901
81	G99-7501	Screw (L)	G99-7501	G99-7501	G99-7501	G99-7501
82	G90-1202	Handle Screw Cap	G68-7603	G68-7603	G68-7603	G68-7603
2-7	H16-8201	Spool Assembly (Extra Spool)	H16-9701	H17-0101	H17-0501	H17-0901