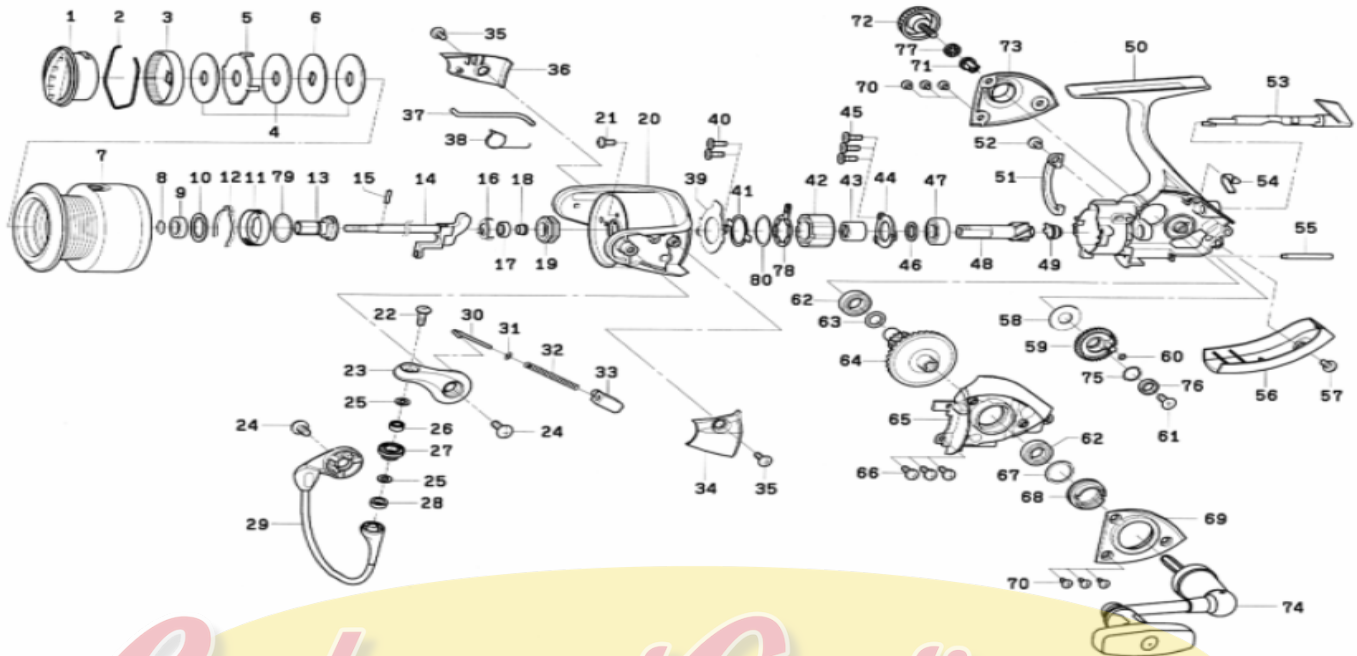


SPINNING REEL **TD-ADVANTAGE 3000A**



Key No.	Parts No.	Parts Name	Key No.	Parts No.	Parts Name
1	H03-8801	Drag Knob	40	G55-7101	Screw (E)
2	F71-0001	Drag Washer Retainer	41	G46-5401	Clutch Cam Retainer
3	F89-5304	Drag knob Click Plate	42	G22-0601	Roller Clutch
4	F69-1001	Drag Washer	43	G46-7501	Spacing Sleeve
5	F62-7301	Eared Washer	44	G46-7402	Bearing Retainer (B)
6	F62-7201	Key Washer	45	G55-7101	Screw (F)
2-7	H03-9601	Spool Assembly	46	375-8509	Washer (D)
2-7	H03-9601	Spool Assembly (Extra Spool)	47	G53-5101	Ball Bearing (C)
8	G47-2401	Collar Retainer	48	G61-1001	Pinion Gear
9	G72-0401	Collar (A)	49	G61-0901	Collar (D)
10	F62-5501	Washer (A)	50	H03-8401	Body
11	G47-2201	Click Leaf Spring Holder	51	G61-1801	Brake Shoe
12	F70-4901	Spool Click Leaf Spring	52	F50-5701	Screw (G)
13	G62-8801	Spool Metal	53	G60-9921	Anti-Reverse Lever
14	G62-8002	Main Shaft	54	G62-7801	Anti-Reverse Cam Spring
15	G37-5001	Pin	55	G61-0801	Stabilizer Bar
16	G47-1501	Bearing Retainer (A)	56	G61-1908	Rear Cover
17	G46-6202	Ball Bearing (A)	57	352-2501	Screw (H)
18	G61-3501	Collar (B)	58	G61-0101	Washer (E)
19	G47-1301	Rotor Nut	59	G63-2101	Oscillating Gear
20	G62-8315	Rotor	60	G46-6001	"O" Ring (A)
21	G62-7701	Screw (A)	61	G46-6301	Screw (I)
22	G19-5601	Screw (B)	62	G46-7302	Ball Bearing (D)
23	G61-2317	Bail Arm	63	G67-0501	"O" Ring (B)
24	G20-5001	Screw (C)	64	G69-9002	Drive Gear
25	F89-7101	Washer (B)	65	G61-1608	Side Cover
26	G28-1601	Ball Bearing (B)	66	G46-8301	Screw (J)
27	F92-1601	Line Roller	67	G61-3400	Washer (F)
28	G04-7601	Collar (C)	68	G61-2401	Screw (K)
29	G62-8501	Bail Assembly	69	G61-1701	Bearing Retainer (C)
30	G47-1803	Bail Spring Shaft	70	G61-1501	Screw (L)
31	E31-3901	Washer (C)	71	F72-1001	Collar (E)
32	G47-1701	Bail Spring	72	G61-4302	Handle Screw
33	G61-2101	Bail Spring Holder	73	G61-1401	Bearing Retainer (D)
34	G62-8401	Cover (A)	74	H03-8501	Handle Assembly
35	G27-0801	Screw (D)	75	G46-6100	Washer (G)
36	G62-8701	Cover (B)	76	G46-6202	Ball Bearing (E)
37	G62-8601	Bail Trip Lever	77	160-8101	Washer (H)
38	G61-3101	Bail Trip Lever Spring	78	F89-6801	Clutch Cam
39	G61-1201	Roller Clutch Retainer	79	G46-8000	Washer (I)
			80	F83-3000	Washer (J)