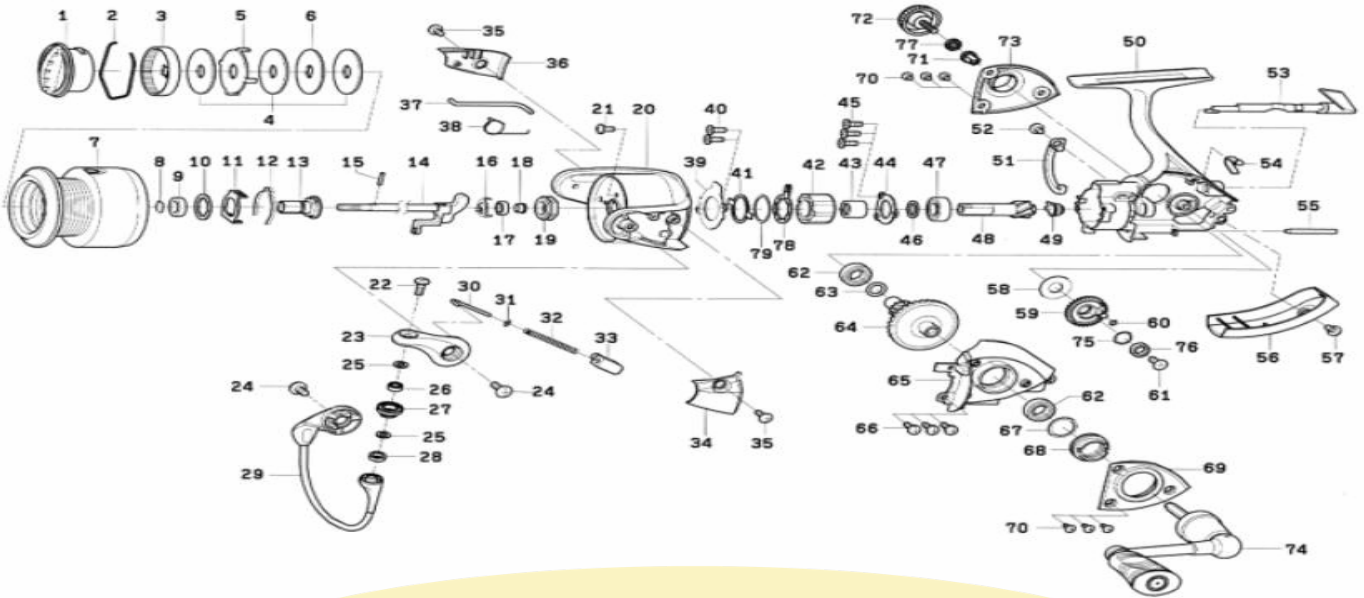


SPINNING REEL

TD-ADVANTAGE 1500A/2000A



Key No.	Parts No.	Parts Name	Key No.	Parts No.	Parts Name
1	H03-9301	Drag Knob	40	G55-7101	Screw (E)
2	F74-2501	Drag Washer Retainer	41	G46-5401	Clutch Cam Retainer
3	F90-8701	Drag knob Click Plate	42	G22-0601	Roller Clutch
4	F63-5001	Drag Washer	43	G46-7501	Spacing Sleeve
5	F63-5201	Eared Washer	44	G46-7402	Bearing Retainer (B)
6	F63-5101	Key Washer	45	G55-7101	Screw (F)
2-7	H03-9101	Spool Assembly	46	375-8509	Washer (D)
2-7	H03-9101	Spool Assembly (Extra Spool)	47	G53-5101	Ball Bearing (C)
8	G47-2401	Collar Retainer	48	G63-0001	Pinion Gear
9	G72-0401	Collar (A)	49	G61-0901	Collar (D)
10	F62-5501	Washer (A)	50	H03-8901	Body
11	G69-3901	Click Leaf Spring Holder	51	G61-1801	Brake Shoe
12	F70-4901	Spool Click Leaf Spring	52	F50-5701	Screw (G)
13	G62-7901	Spool Metal	53	G60-9921	Anti-Reverse Lever
14	G62-9602	Main Shaft	54	G62-7801	Anti-Reverse Cam Spring
15	G37-5001	Pin	55	G62-9901	Stabilizer Bar
16	G47-1501	Bearing Retainer (A)	56	G63-0406	Rear Cover
17	G46-6202	Ball Bearing (A)	57	351-1801	Screw (H)
18	G61-3501	Collar (B)	58	G61-0103	Washer (E)
19	G47-1301	Rotor Nut	59	G62-9501	Oscillating Gear
20	G63-0514	Rotor	60	G46-6001	"O" Ring (A)
21	G62-7701	Screw (A)	61	G46-6301	Screw (I)
22	G19-5601	Screw (B)	62	G46-7302	Ball Bearing (D)
23	G61-2317	Bail Arm	63	G67-0501	"O" Ring (B)
24	G20-5001	Screw (C)	64	G69-9002	Drive Gear
25	F89-7101	Washer (B)	65	G63-0206	Side Cover
26	G28-1601	Ball Bearing (B)	66	G46-8301	Screw (J)
27	F92-1601	Line Roller	67	G61-3400	Washer (F)
28	G04-7601	Collar (C)	68	G61-2401	Screw (K)
29	G63-0701	Bail Assembly	69	G63-0301	Bearing Retainer (C)
30	G47-1803	Bail Spring Shaft	70	G61-1501	Screw (L)
31	E31-3901	Washer (C)	71	F72-1001	Collar (E)
32	G47-1701	Bail Spring	72	G61-4302	Handle Screw
33	G61-2101	Bail Spring Holder	73	G63-0101	Bearing Retainer (D)
34	G63-0601	Cover (A)	74	H03-9001	Handle Assembly
35	G27-0801	Screw (D)	75	G46-6100	Washer (G)
36	G63-0901	Cover (B)	76	G46-6202	Ball Bearing (E)
37	G63-0801	Bail Trip Lever	77	160-8101	Washer (H)
38	G61-3101	Bail Trip Lever Spring	78	F89-6801	Clutch Cam
39	G61-1201	Roller Clutch Retainer	79	F83-3000	Washer (I)

Key No.	Parts No.	Parts Name
2-7	H03-9401	Spool Assembly
2-7	H03-9401	Spool Assembly (Extra Spool)