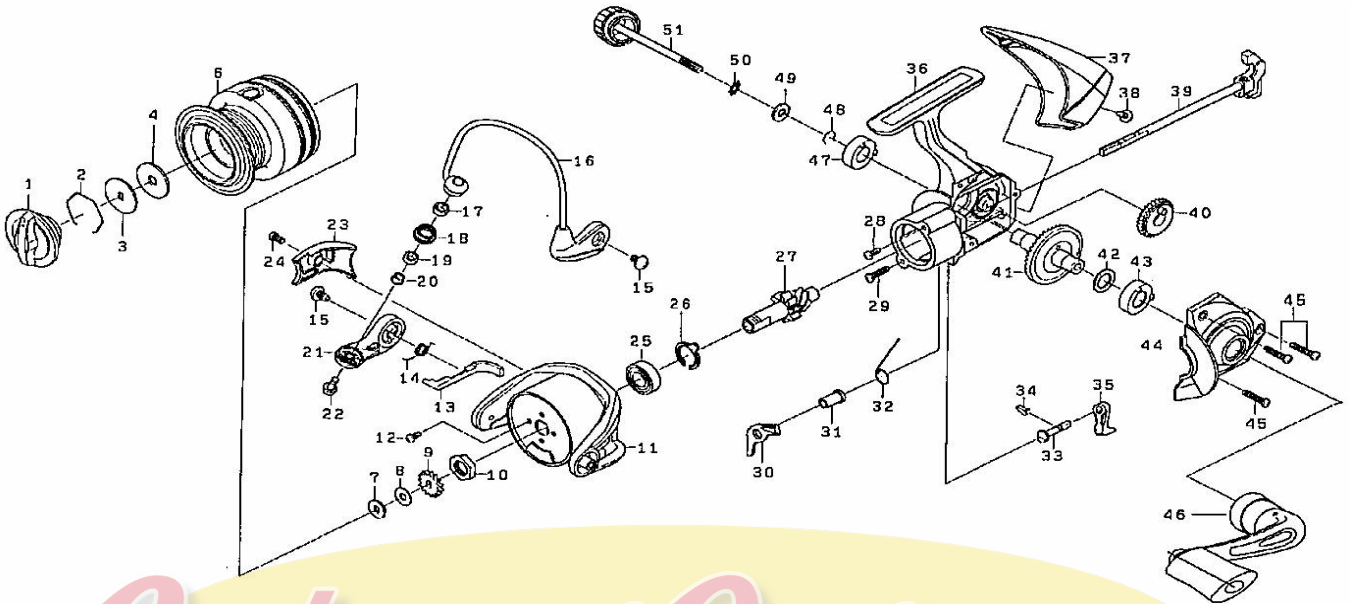


Please order by parts number, not key number
Veuillez indiquer le numéro de la pièce (Non "Key" No.)

Daiwa
COMMITTED TO TOTAL QUALITY
SPINNING REEL

SWEEPFIRE 1000B



Key No.	Parts No.	Parts Name	Key No.	Parts No.	Parts Name
1	H02-1701	Drag Knob	27	H01-8901	Pinion gear
2	F37-3301	Drag Washer Retainer	28	G41-0601	Screw (E)
3	E46-7201	Key Washer	29	H12-0301	Screw (F)
4	E13-6001	Drag Washer	30	H01-9301	Anti-Reverse Pawl
2-6	H06-5201	Spool Assembly	31	H01-9101	Anti-Reverse Pawl Collar
7	E46-7101	Washer (A)	32	H01-9201	Anti-Reverse Pawl Spring (B)
8	E39-8000	Washer (B)	33	H01-8301	Anti-Reverse Cam
9	G83-9301	Click Gear	34	G83-6401	Anti-Reverse Cam Spring
10	F33-6102	Rotor Nut	35	H01-8401	Anti-Reverse Lever
11	H01-9803	Rotor	36	H01-8203	Body
12	G62-7701	Screw (A)	37	H01-9701	Rear Cover
13	H02-0001	Bail Trip Lever	38	G27-0801	Screw (G)
14	H01-9901	Bail Spring	39	H01-8601	Main Shaft
15	G20-5001	Screw (B)	40	H01-8501	Oscillating Gear
16	H02-0301	Bail Assembly	41	H01-9401	Drive Gear
17	G87-4201	Collar (A)	42	375-8500	Washer (C)
18	F62-5002	Line Roller	43	H02-2001	Collar (D)
19	G87-4301	Collar (B)	44	H01-9603	Side Cover
20	G15-2502	Collar (C)	45	F93-9701	Screw (H)
21	H02-0101	Bail Arm	46	H06-5101	Handle Assembly
22	G19-5602	Screw (C)	47	H02-2001	Collar (E)
23	H02-0201	Cover	48	H01-9501	Bearing Retainer
24	G27-0801	Screw (D)	49	G86-3901	Washer (D)
25	G28-5801	Ball Bearing	50	160-8101	Washer (E)
26	H01-9001	Anti-Reverse Pawl Spring (A)	51	H02-1001	Handle Screw