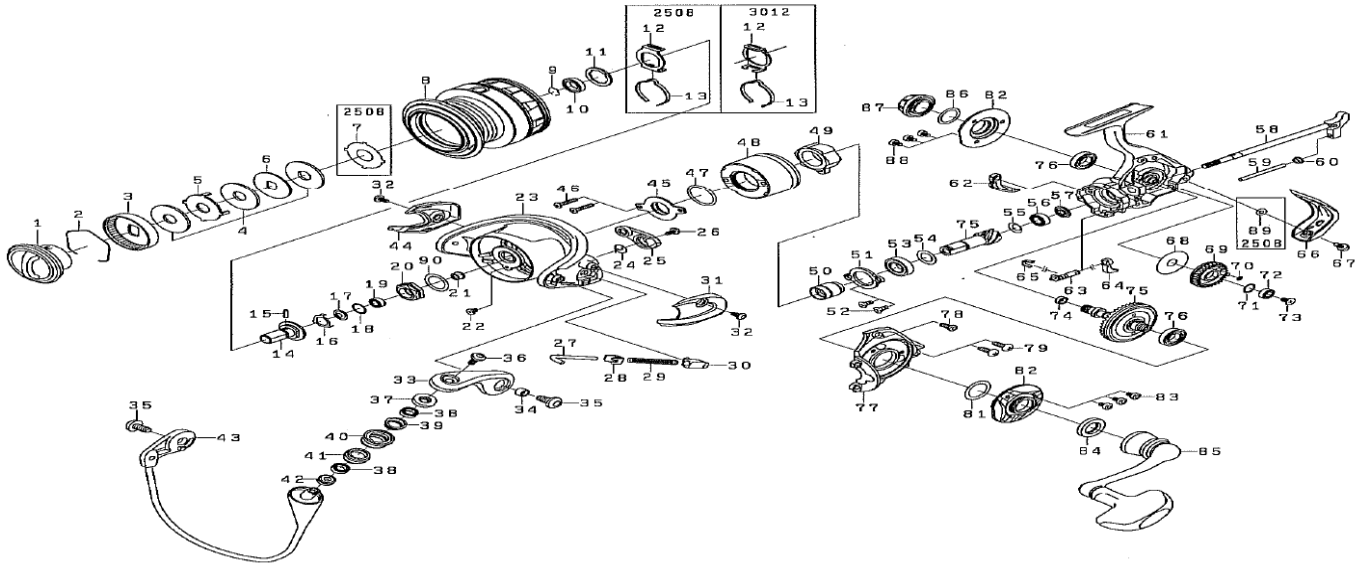




Please order by parts number, not key number  
 Veuillez indiquer le numéro de la pièce (Non "Key" No.)

# SPINNING REEL STEEZ EX 2508H-3012H



KEY NO.	Parts Name	STEEZ EX2508H PARTS NO.	STEEZ EX3012H PARTS NO.
1	DRAG KNOB	H84-0801	H84-0801
2	DRAG WASHER RETAINER	F71-0001	F71-0001
3	DRAG KNOB CLICK PLATE	F89-5301	F89-5301
4	DRAG WASHER	H80-8501	H80-8701
5	EARED WASHER	F63-5201	F62-7301
6	KEY WASHER	F63-5101	F62-7201
7	DRAG PLATE	H74-5701	
2-8	SPOOL ASSEMBLY	H86-0401	H84-1401
9	BEARING RETAINER(A)	G47-2401	G47-2401
10	BALL BEARING(A)	G81-8901	G81-8901
11	WASHER(A)	H80-6300	H80-6300
12	WASHER(B)	H74-5701	H41-6001
13	MAGNET LEAF SPRING HOLDER	H41-6101	H41-6101
14	SPOOL CLICK LEAF SPRING	H41-6101	H41-6101
15	SPOOL METAL	H41-5901	H71-9301
16	PIN	G37-5001	G37-5001
17	BEARING RETAINER(B)	G47-1501	G47-1501
18	PACKING(A)	H41-5701	H46-1201
19	WASHER(B)	G46-6103	G46-6103
20	BALL BEARING(B)	G46-6201	G46-6201
21	ROTOR NUT	H80-5801	H80-5801
22	COLLAR(A)	H85-4801	H85-4901
23	SCREW(A)	H02-2701	H02-2701
24	ROTOR	H74-1802	H77-9702
25	BAIL TRIP LEVER SPRING	H41-3601	H41-3601
26	BAIL TRIP LEVER	H74-9801	H74-9801
27	SCREW(B)	H41-7701	H41-7701
28	BAIL SPRING SHAFT	H74-2101	H78-0001
29	BAIL SPRING PLATE	H57-6101	H57-6101
30	BAIL SPRING HOLDER	H41-4201	H41-4201
31	COVER(A)	H41-4301	H41-4301
32	SCREW(C)	H74-2501	H78-0101
33	BAIL ARM	H74-1702	H74-1702
34	COLLAR(B)	H74-2302	H74-2302
35	SCREW(D)	H74-2301	H74-2301
36	SCREW(E)	H65-6102	H65-6102
37	MAGNET ASSEMBLY(A)	H74-4201	H74-4201
38	BALL BEARING(C)	H73-7801	H73-7801
39	COLLAR(C)	G68-6901	G68-6901
40	LINE ROLLER	H74-3901	H74-3901
41	COLLAR(D)	H74-3801	H74-3801
42	MAGNET ASSEMBLY(B)	H74-3701	H74-3701
43	BAIL ASSEMBLY	H74-3401	H74-3401
44	COVER(B)	H74-2701	H78-0201
45	MAGNET ASSEMBLY(C)	H74-3301	H78-0501
46	SCREW(F)	H74-3901	H74-0901
47	"O"RING(A)	H59-6502	H59-6502
48	COVER(C)	H74-1401	H74-1401
49	ROLLER GLUTCH	H74-0601	H74-0601
50	SPACING SLEEVE	H41-2601	H41-2601
51	BEARING RETAINER(C)	H74-0501	H74-0501
52	SCREW(G)	H73-9101	H73-9101
53	BALL BEARING(D)	G99-7301	G99-7301
54	WASHER(C)	G27-9602	G27-9602
55	SPRING WASHER	375-8500	H41-1400
56	BALL BEARING(E)	H81-4900	G57-2500
57	COLLAR(E)	H73-8901	G46-7101
58	MAIN SHAFT	H41-1201	H45-9401
59	STABILIZER BAR	H73-8401	H77-8401
60	COLLAR(F)	H73-8701	H77-8701
61	BODY	H73-8801	H77-8801
62	BAIL TRIP PLATE	H83-9801	H84-0901
63	ANTI-REVERSE CAM	H73-7801	H73-7801
64	ANTI-REVERSE LEVER	H73-8201	H73-8201
65	ANTI-REVERSE CAM SPRING	H41-0103	H41-0103
66	REAR COVER	H80-9201	H80-9201
67	SCREW(H)	H74-1501	H74-9601
68	WASHER(D)	H74-1701	H73-9301
69	OSCILLATING GEAR	H60-7902	H54-5402
70	"O"RING(B)	H73-8301	H45-8902
71	SCREW(I)	G68-3301	G86-9601
72	BALL BEARING(F)	H12-3700	G46-6103
73	SCREW(J)	G46-9002	G46-6202
74	RING	G99-7001	G99-7001
75	PINION GEAR + DRIVE GEAR	H45-5601	H45-9901
76	BALL BEARING(G)	P02-0365	Z02-0754
77	SIDE COVER	H73-9703	H73-9703
78	SCREW(K)	H74-0102	H77-9502
79	SCREW(L)	H74-0201	H74-0201
80	WASHER(E)	G99-7701	G99-7701
81	WASHER(F)	G46-8000	G46-8000
82	BEARING RETAINER(D)	H83-9901	H84-1001
83	SCREW(M)	H74-0301	H74-0301
84	PACKING(B)	H86-6201	H86-6201
85	HANDLE ASSEMBLY	H84-0301	H84-1101
86	"O"RING(C)	G39-9702	G39-9702
87	HANDLE SCREW CAP	H74-5101	H74-5101
88	SCREW(N)	H74-0001	H74-0001
89	WASHER(G)	F35-2702	
90	WASHER(H)	371-2824	371-2824