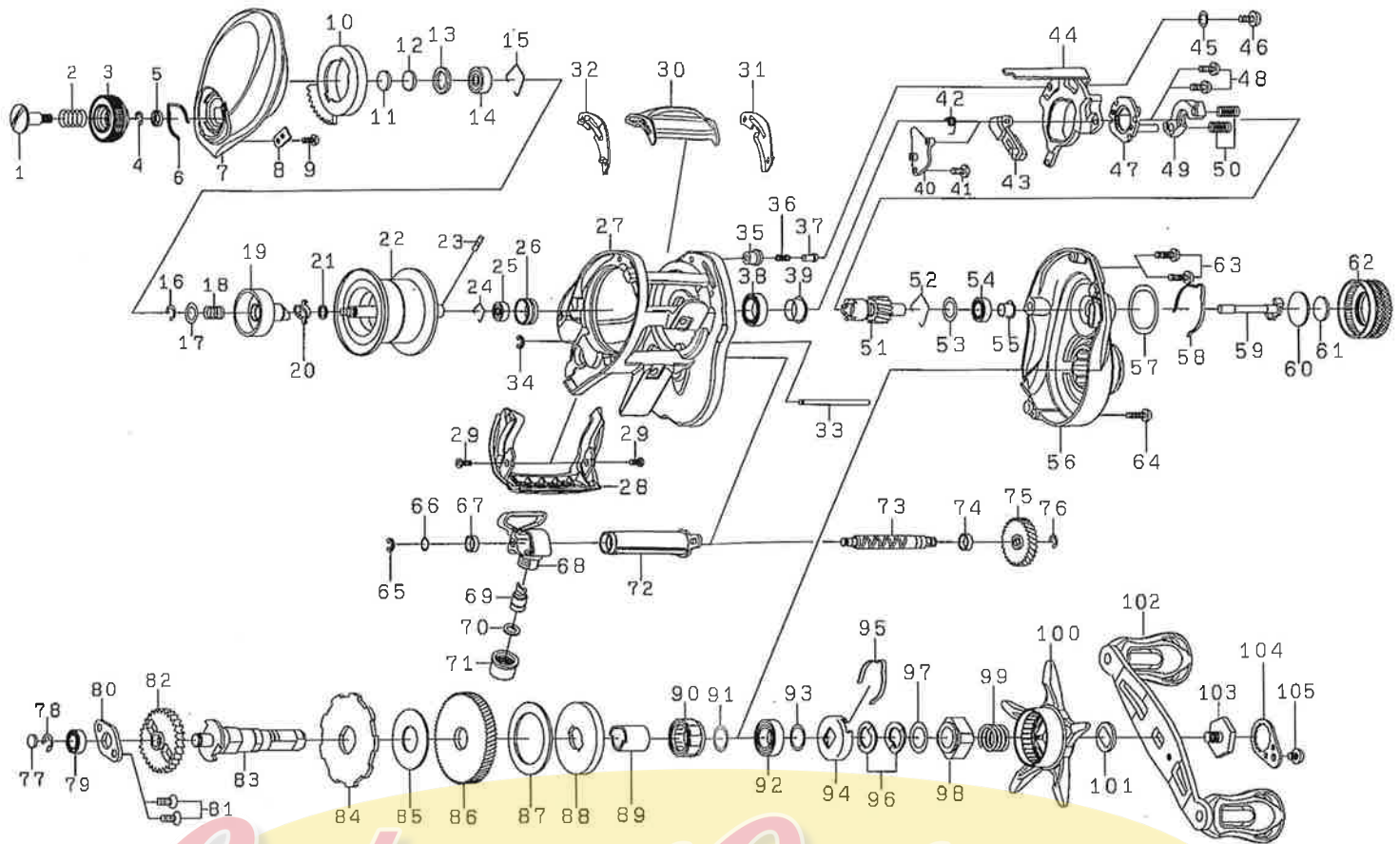




Baitcasting Reel



*Please order by parts number, not key number.

SILVER WOLF Z 1016SV-TW

Key No.	Parts No.	Parts Name	Key No.	Parts No.	Parts Name
1	6H930401	Screw (A)	59	6J198801	Pinion shaft
2	6E167101	Spring (A)	60	6H161001	Spacer (F)
3	6H930208	Brake dial	61	6B175503	Spacer (G)
4	6B339801	Brake dial Retainer (A)	62	6J097405	Cast control cap
5	6F637701	Brake dial washer	63	6G040822	Right side plate screw (A)
6	6H663401	Brake click spring (A)	64	6G040821	Right side plate screw (B)
7	6J367901	Left side plate	65	63205901	Retainer (B)
8	6H915501	Brake dial Retainer (B)	66	6B411702	Washer (C)
9	6G939301	Screw (B)	67	6G720001	Worm shaft spacer (A)
10	6J244401	Magnet holder	68	6J243301	T-Level wind
11	63757404	Spacer (A)	69	61214212	Line guide pawl
12	63757411	Spacer (B)	70	63731300	Washer (D)
13	6G185101	Spacer (C)	71	6F402801	Line guide nut
14	6G511506	Ball bearing (A)	72	6J243701	Level wind guard
15	6F032201	Bearing retainer (A)	73	6J243601	Worm shaft
16-26	62022985	Spool assembly	74	6G720001	Worm shaft spacer (B)
27	6J367601	Frame	75	6H910501	Worm gear
28	6J244004	Front plate	76	6B339801	Retainer (C)
29	6H842803	Screw (C)	77	6G099800	Washer (E)
30	6J242901	Clutch lever	78	63208002	Retainer (D)
31	6H915601	Spacer (D)	79	6G538002	Ball bearing (D)
32	6H915701	Spacer (E)	80	6H156501	Plate (C)
33	6J244101	Stabilizer bar	81	6E134509	Screw (F)
34	6H704101	Retainer (A)	82	6H912701	Drive shaft gear
35	6H910601	Collar	83	6J243101	Drive shaft
36	6H928801	Spring (B)	84	6H929401	Clutch wheel
37	6J055201	Pin	85	6J085101	Drive shaft washer (A)
38	6G431002	Ball bearing (B)	86	6J075401	Drive gear
39	6H266601	Ball bearing collar (A)	87	6H452602	Drive shaft washer (B)
40	6J242801	Plate (A)	88	6H913201	Key washer
41	6H294101	Screw (D)	89	6J377801	Gear shaft collar
42	6J243201	Clutch cam spring	90	6G819801	Roller clutch
43	6J221401	Clutch trip lever	91	6B553802	Washer (F)
44	6J242601	Clutch cam	92	6G431002	Ball bearing (E)
45	6H159201	Washer (A)	93	6B553801	Washer (G)
46	63522501	Screw (E)	94	6F028203	Click leaf spring holder
47	6H659101	Clutch cam plate	95	6F032401	Click leaf spring
48	6B032904	Clutch cam screw	96	61508901	Drag spring washer
49	6H929001	Yoke	97	6H929501	Washer (G)
50	6J055301	Yoke spring	98	6J141001	Nut
51	6J075301	Pinion gear	99	6J011901	Spring (C)
52	6H160801	Bearing retainer (B)	100	6J140001	Star drag
53	6J073501	Washer (B)	101	6F576601	Handle collar
54	6J019301	Ball bearing (C)	102	6J367701	Handle assembly
55	6H159502	Ball bearing collar (B)	103	6G779101	Handle screw (A)
56	6J367501	Right side plate	104	6H834504	Handle plate
57	6H157002	"O"ring (A)	105	63538301	Handle screw (B)
58	6H160901	Brake click spring (B)			

■ Lubrication

Grease gearing, clutch system parts with a quality light-grade grease. Oil spool shaft ends, worm track gears, ball bearings and bushing. (However, do not oil MAG SEALED ball bearing.)

■ Warranty

Daiwa will repair or replace any Daiwa reel which proves defective in workmanship or materials within one year from the date of original purchase. This warranty gives you specific legal rights and you may also have other rights which vary from state to state. Retain your sales slip as proof of purchase date. In the event warranty work becomes necessary, this warranty does not cover lost parts, malfunctions or damage due to abuse, accident or normal wear, or cleaning or relubrication required due to owner's failure to provide reasonable and necessary maintenance. Repairs to your Daiwa reel due to abnormal use, modification or beyond the warranty period are available for a reasonable charge, from Daiwa's Factory Service Department.

■ Warranty Repairs and Service

Daiwa reels needing warranty work should be sent postage prepaid to Daiwa's Factory Service Department. If repairs beyond the terms of the warranty are required, we'll make them for a reasonable charge for parts and labor. An invoice will accompany the repaired reel when it is returned to you. Non-Warranty repairs on Daiwa reels can also be had at any Daiwa Authorized Service Station nationwide.

■ Parts Orders

Your parts list shows all parts numbers for your reel. Order parts by REEL MODEL NO. and PART NO. after identifying the needed parts on the parts list. Include both numbers for each part with your order. Send order to the Daiwa Factory Service Department. You will be advised of parts prices before shipment.

■ Note

The above conditions apply only to rods and reels purchased in the U.S.A. or Canada. Please contact your local distributor for warranty and repair service conditions for rods and reels purchased in other countries.

■ Precautions

- It is recommended that you wash the reel with water after use.
 - Tighten the drag and then wash the reel with freshwater for between one and two minutes.
 - Detach the spool, and wash it with water.
 - (If you attach the spool to the body of the reel while it is wet, the motion of the spool pulley will be adversely affected.
 - Before installing the spool, wipe away all traces of moisture on it.)
 - Wipe away moisture, tighten the drag, and then allow the reel to dry in a location that is not exposed to direct sunlight.
- If the worm shaft or pillar is dirty, remove the dirt with a cotton swab, or the like.
- Please do not leave grease or oil on the surface of the handle knob for long periods of time, as this may cause it to swell or change shape.

● DAIWA (AUSTRALIA)
PTY. LTD.
Unit K, 134-140 Old Pittwater
Road Brookvale,
N.S.W. 2100 Australia
Phone: (2) 8644 8644