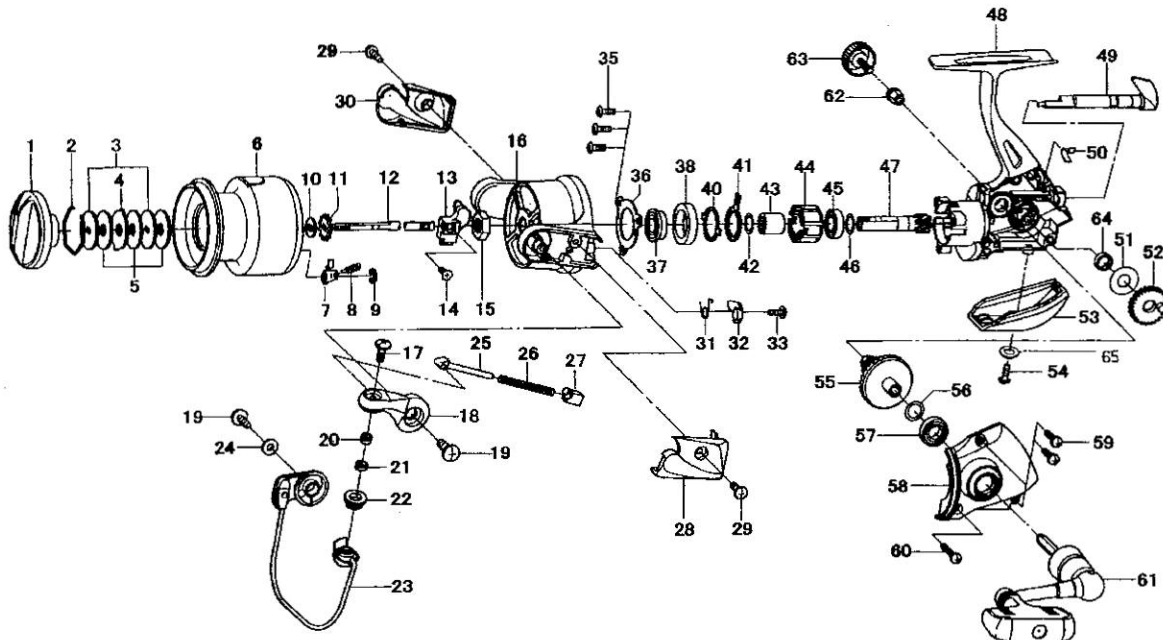


ONDINE 3500 / 4000



Key No.	Parts No.	Parts Name	Key No.	Parts No.	Parts Name
1	F75-0108	DRAG KNOB	36	G22-9901	BEARING RET
2	F37-3301	DRAG WASHER RET	37	F25-2901	BALL BEARING A
3	F09-4901	KEY WASHER	38	F92-0602	BALL BEARING COLLAR
4	373-3603	EARED WASHER	40	F64-1501	CLUTCH CAM RET
5	E13-6001	DRAG WASHER	41	F64-1401	CLUTCH CAM
2-9	G25-5701	SPOOL	42	373-7814	CLUTCH CAM WASHER
2-9	G28-0601	SPOOL (EXTRA)	43	F73-2203	SPACING SLEEVE
7	B07-5304	CLICK PAWL	44	G31-4501	ROLLER CLUTCH
8	E40-3101	CLICK SPRING	45	F64-1101	BALL BEARING B
9	320-5901	CLICK RET	46	373-7814	PINION GEAR WASHER
10	F09-4701	SPOOL WASHER	47	G29-1301	PINION GEAR
11	E46-2701	CLICK GEAR	48	G25-5601	BODY
12	G29-1701	MAIN SHAFT	49	G19-3103	A/R LEVER
13	G02-5501	OSC SLIDER	50	G19-3301	A/R CAM SPRING
14	352-1505	OSC SLIDER SCREW	51	G13-1700	OSC GEAR WASHER
15	G12-3301	ROTOR NUT	52	F74-7801	OSC GEAR
16	G02-6006	ROTOR	53	G23-0101	REAR COVER
17	G01-8601	LINE ROLLER SCREW	54	F50-5701	REAR COVER SCREW
18	G01-7801	BAIL ARM	55	G02-5601	DRIVE GEAR
19	G20-5001	BAIL ARM SCREW	56	373-7808	DRIVE GEAR WASHER
20	G15-2501	LINE ROLLER COLLAR	57	631-6901	BALL BEARING C
21	G17-3801	LINE ROLLER WASHER	58	G23-0004	SIDE COVER
22	F62-5001	LINE ROLLER	59	351-1106	SIDE COVER SCREW A
23	G02-6502	BAIL	60	G25-9101	SIDE COVER SCREW B
24	F40-1001	BAIL HOLDER WASHER	61	G25-5001	HANDLE
25	G01-7502	BAIL SPRING SHAFT	62	F72-1201	HANDLE COLLAR
26	G14-8601	BAIL SPRING	63	F42-5802	HANDLE SCREW
27	G01-7401	BAIL SPRING HOLDER	64	F13-1601	OSC GEAR COLLAR
28	G02-6404	BAIL SPRING COVER	65	G25-6401	REAR COVER WASHER
29	G20-5101	BAIL SPRING COVER SCREW			
30	G02-6704	BAIL HOLDER COVER			
31	G01-7201	BAIL TRIP LEVER SPRING			
32	G01-7301	BAIL TRIP LEVER			
33	G19-3701	BAIL TRIP LEVER SCREW			
35	352-2501	BEARING RET SCREW			

ON4000 SPECIAL PARTS

Key No.	Parts No.	Parts Name
2-9	G25-6201	SPOOL
2-9	G28-0701	SPOOL (EXTRA)