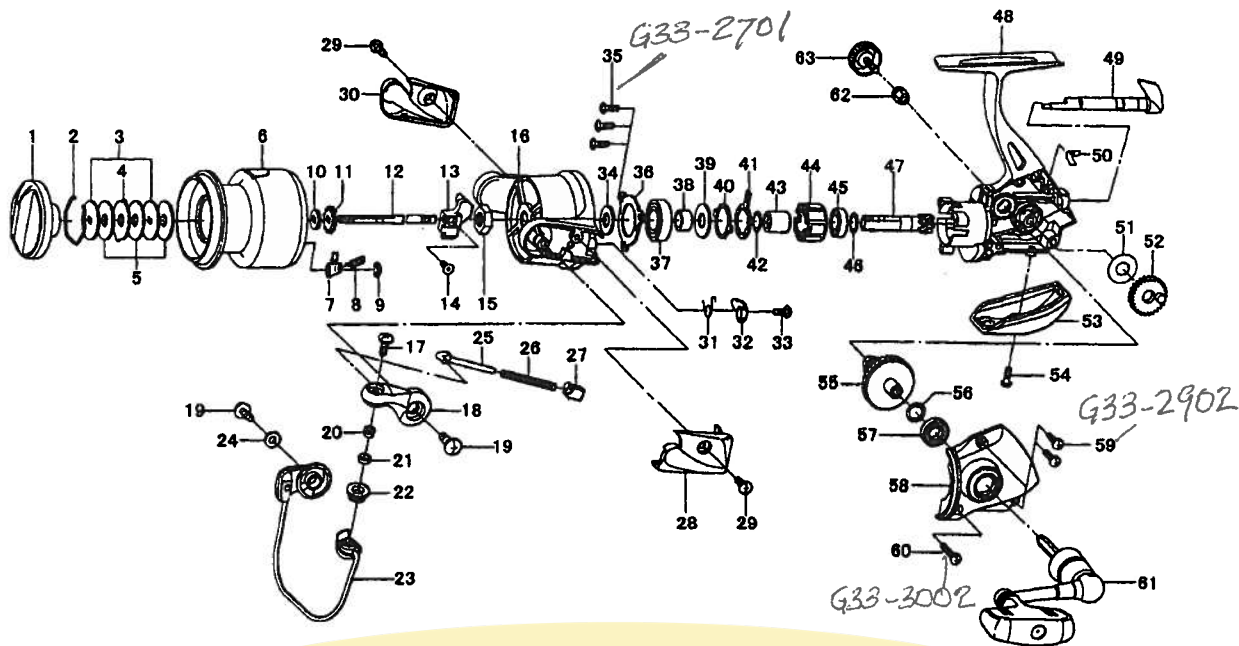


ONDINE 2500



Key No.	Parts No.	Parts Name	Key No.	Parts No.	Parts Name
1	F77-7610	DRAG KNOB	32	G01-7301	BAIL TRIP LEVER
2	F37-3301	DRAG WASHER RET	33	G19-3701	BAIL TRIP LEVER SCREW
3	E46-7201	KEY WASHER	34	373-5403	BEARING RET WASHER
4	373-3603	EARED WASHER	35	352-2501	BEARING RET SCREW
5	E13-6001	DRAG WASHER	36	G19-3601	BEARING RET
2-9	G23-9201	SPOOL	37	637-6101	BALL BEARING A
2-9	G10-0202	SPOOL (EXTRA)	38	G19-3501	BALL BEARING COLLAR
7	B07-5304	CLICK PAWL	39	B27-5403	BALL BEARING WASHER
8	E40-3101	CLICK SPRING	40	F62-2301	CLUTCH CAM RET
9	320-5901	CLICK RET	41	F62-2201	CLUTCH CAM
10	E46-7101	SPOOL WASHER	42	375-8502	CLUTCH CAM WASHER
11	F81-1501	CLICK GEAR	43	F73-2501	SPACING SLEEVE
12	G29-1501	MAIN SHAFT	44	G22-0601	ROLLER CLUTCH
13	G01-6501	OSC SLIDER	45	634-1301	BALL BEARING B
14	351-0315	OSC SLIDER SCREW	46	375-8504	PINION GEAR WASHER
15	F33-6102	ROTOR NUT	47	G29-1201	PINION GEAR
16	G01-7105	ROTOR	48	G23-9101	BODY
17	G01-8601	LINE ROLLER SCREW	49	G19-3101	A/R LEVER
18	G01-7801	BAIL ARM	50	G19-3301	A/R CAM SPRING
19	G20-5001	BAIL ARM SCREW	51	F76-7700	OSC GEAR WASHER
20	G15-2501	LINE ROLLER COLLAR	52	F67-7401	OSC GEAR
21	G17-3801	LINE ROLLER WASHER	53	G19-3901	REAR COVER
22	F62-5001	LINE ROLLER	54	F50-5701	REAR COVER SCREW
23	G01-8002	BAIL	55	G01-6601	DRIVE GEAR
24	F40-1001	BAIL HOLDER WASHER	56	375-8500	DRIVE GEAR WASHER
25	G01-7504	BAIL SPRING SHAFT	57	634-1301	BALL BEARING C
26	G01-7701	BAIL SPRING	58	G19-3803	SIDE COVER
27	G01-7401	BAIL SPRING HOLDER	59	351-1106	SIDE COVER SCREW A
28	G01-7904	BAIL SPRING COVER	60	G25-9101	SIDE COVER SCREW B
29	G20-5101	BAIL SPRING COVER SCREW	61	G23-8501	HANDLE
30	G01-8504	BAIL HOLDER COVER	62	F72-1001	HANDLE COLLAR
31	G01-7201	BAIL TRIP LEVER SPRING	63	F67-6503	HANDLE SCREW