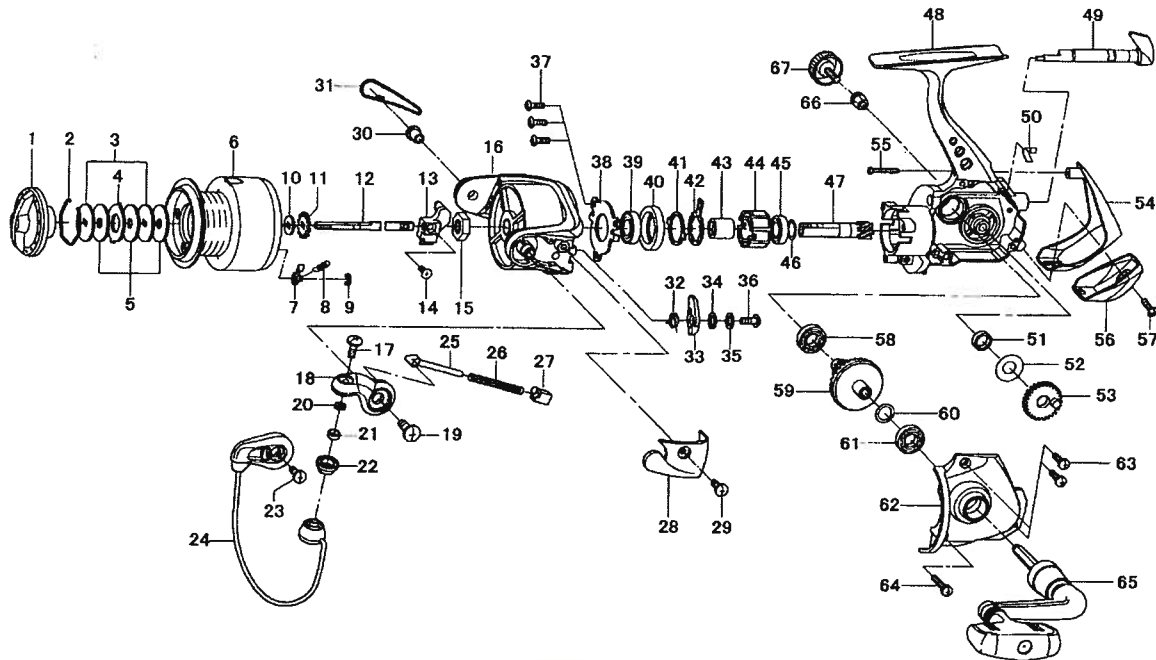


LAGUNA 3500 / 4000



| Key No. | Parts No. | Parts Name | Key No. | Parts No. | Parts Name |
|---------|-----------|--------------------------|---------|-----------|---------------------|
| 1 | G35-4801 | DRAG KNOB | 37 | G33-2701 | BEARING RET SCREW |
| 2 | F37-3301 | DRAG WASHER RET | 38 | G35-3701 | BEARING RET |
| 3 | F09-4901 | KEY WASHER | 39 | G35-3401 | BALL BEARING B |
| 4 | 373-3603 | EARED WASHER | 40 | G35-3601 | BALL BEARING COLLAR |
| 5 | E13-6001 | DRAG WASHER | 41 | F64-1501 | CLUTCH CAM RET |
| 2-9 | G35-4601 | SPOOL | 42 | F64-1401 | CLUTCH CAM |
| 2-9 | G38-4201 | SPOOL (EXTRA) | 43 | G35-3501 | SPACING SLEEVE |
| 7 | B07-5304 | CLICK PAWL | 44 | G31-4501 | ROLLER CLUTCH |
| 8 | E40-3101 | CLICK SPRING | 45 | G35-3401 | BALL BEARING C |
| 9 | 320-5901 | CLICK RET | 46 | 373-7814 | PINION WASHER |
| 10 | F09-4701 | SPOOL WASHER | 47 | G02-5301 | PINION GEAR |
| 11 | E46-2701 | CLICK GEAR | 48 | G35-3301 | BODY |
| 12 | G02-5701 | MAIN SHAFT | 49 | G19-3103 | A/R LEVER |
| 13 | G02-5501 | OSC SLIDER | 50 | G19-3301 | A/R CAM SPRING |
| 14 | 352-1505 | OSC SLIDER SCREW | 51 | F13-1601 | OSC GEAR COLLAR |
| 15 | G12-3301 | ROTOR NUT | 52 | G13-1700 | OSC GEAR WASHER |
| 16 | G23-0204 | ROTOR | 53 | F74-7801 | OSC GEAR |
| 17 | G01-8601 | LINE ROLLER SCREW | 54 | G35-3901 | REAR COVER A |
| 18 | G19-4501 | BAIL ARM | 55 | G34-3701 | REAR COVER SCREW A |
| 19 | G22-4901 | BAIL ARM SCREW | 56 | G35-4001 | REAR COVER B |
| 20 | F89-7101 | LINE ROLLER WASHER | 57 | G33-2701 | REAR COVER SCREW B |
| 21 | G28-5701 | BALL BEARING A | 58 | 631-6901 | BALL BEARING D |
| 22 | F62-5001 | LINE ROLLER | 59 | G02-5601 | DRIVE GEAR |
| 23 | 351-6101 | BAIL HOLDER SCREW | 60 | 373-7808 | DRIVE GEAR WASHER |
| 24 | G35-4101 | BAIL | 61 | 631-6901 | BALL BEARING E |
| 25 | G01-7502 | BAIL SPRING SHAFT | 62 | G35-3801 | SIDE COVER |
| 26 | G14-8601 | BAIL SPRING | 63 | G33-2902 | SIDE COVER SCREW A |
| 27 | G01-7401 | BAIL SPRING HOLDER | 64 | G33-3002 | SIDE COVER SCREW B |
| 28 | G23-0302 | BAIL SPRING COVER | 65 | G35-4401 | HANDLE |
| 29 | G20-5101 | BAIL SPRING COVER SCREW | 66 | F72-1201 | HANDLE COLLAR |
| 30 | G19-5101 | BAIL HOLDER NUT | 67 | F67-6509 | HANDLE SCREW |
| 31 | G35-4301 | BAIL HOLDER COVER | | | |
| 32 | G19-4101 | BAIL TRIP LEVER SPRING | | | |
| 33 | G26-5501 | BAIL TRIP LEVER | | | |
| 34 | 375-3002 | BAIL TRIP LEVER WASHER A | | | |
| 35 | 375-3003 | BAIL TRIP LEVER WASHER B | | | |
| 36 | G19-3701 | BAIL TRIP LEVER SCREW | | | |

SPECIAL PART FOR LA4000

| Key No. | Parts No. | Parts Name |
|---------|-----------|---------------|
| 2-9 | G35-5801 | SPOOL |
| 2-9 | G38-4501 | SPOOL (EXTRA) |