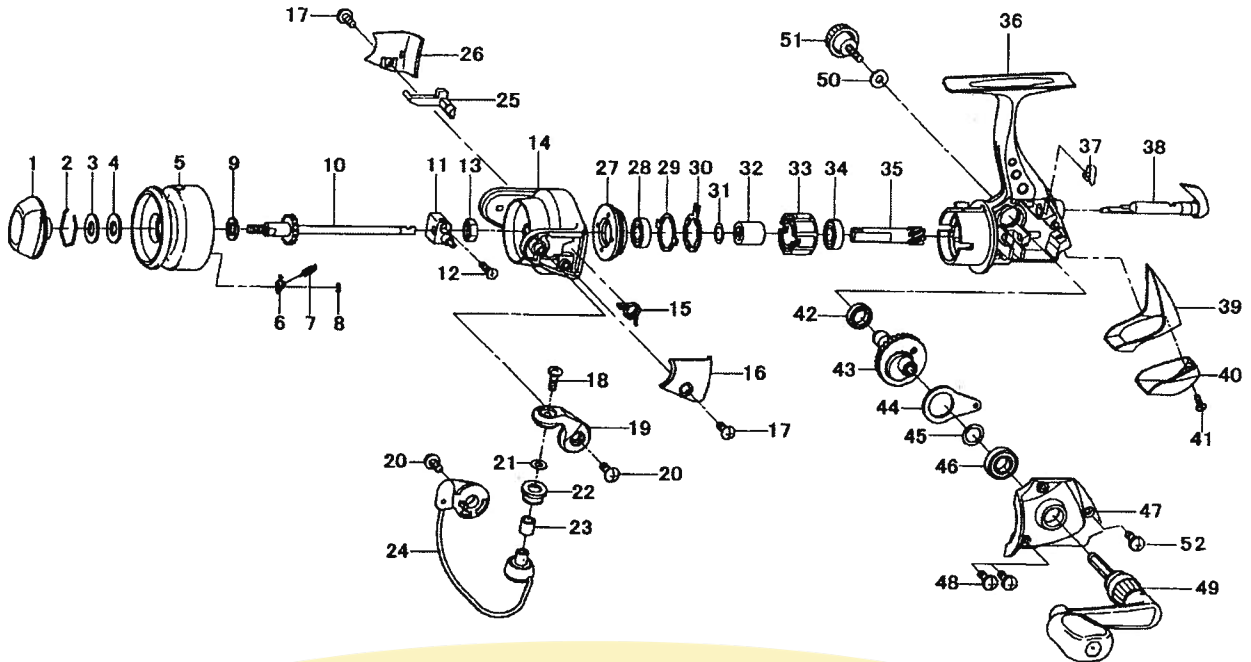


# KASTOR 500 / 1000



Key No.	Parts No.	Parts Name	Key No.	Parts No.	Parts Name
1	E58-4301	DRAG KNOB	29	F62-2301	CLUTCH CAM RET
2	F66-7901	DRAG WASHER RET	30	E58-0701	CLUTCH CAM
3	F66-7801	KEY WASHER	31	B12-8701	CLUTCH CAM WASHER
4	F66-7701	DRAG WASHER	32	E58-0601	SPACING SLEEVE
2-8	E58-2501	SPOOL	33	G22-0601	ROLLER CLUTCH
2-8	E58-4601	SPOOL (EXTRA)	34	E18-2801	BALL BEARING C
6	F66-7601	CLICK PAWL	35	E58-0501	PINION GEAR
7	144-1211	CLICK SPRING	36	E58-0102	BODY
8	B86-4101	CLICK RET	37	F66-4501	A/R CAM SPRING
9	F66-7000	SPOOL WASHER	38	E58-0301	A/R LEVER
10	F66-6302	MAIN SHAFT	39	E58-1102	REAR COVER A
11	E32-0601	OSC SUPPORT	40	E58-1202	REAR COVER B
12	E15-0201	OSC SUPPORT SCREW	41	F98-9401	REAR COVER SCREW
13	342-4001	ROTOR NUT	42	F69-0801	BALL BEARING D
14	G49-5801	ROTOR	43	F66-6101	DRIVE GEAR
15	E32-0201	BAIL SPRING	44	F66-6501	OSC SLIDER
16	E58-1501	BAIL SPRING COVER	45	375-8500	DRIVE GEAR WASHER
17	352-2501	BAIL SPRING COVER SCREW	46	637-5701	BALL BEARING E
18	G01-8601	LINE ROLLER SCREW	47	E58-1002	SIDE COVER
19	E58-1401	BAIL ARM	48	351-7801	SIDE COVER SCREW A
20	351-6101	BAIL ARM SCREW	49	E58-2201	HANDLE
21	F89-7101	LINE ROLLER WASHER	50	F02-0201	HANDLE WASHER
22	F62-5001	LINE ROLLER	51	E03-5507	HANDLE SCREW
23	G02-0801	BALL BEARING A	52	E49-2201	SIDE COVER SCREW B
24	E58-1801	BAIL			
25	E58-1601	BAIL TRIP LEVER			
26	E58-1701	BAIL TRIP LEVER COVER			
27	E58-0801	BEARING RET			
28	E18-2801	BALL BEARING B			

**SPECIAL PART FOR KA1000**

Key No.	Parts No.	Parts Name
2-8	E58-2801	SPOOL
2-8	E58-4801	SPOOL (EXTRA)