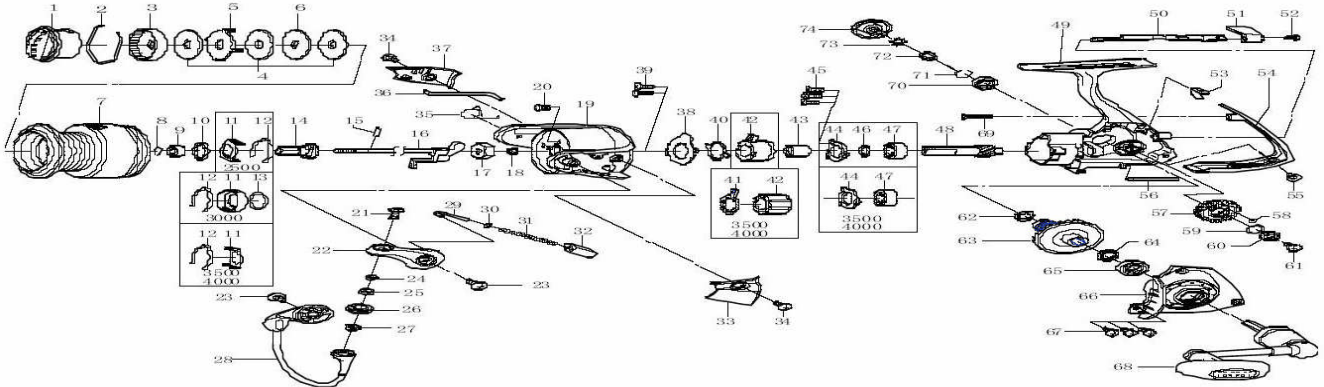


Please order by parts number, not key number
 Veuillez indiquer le numéro de la pièce (Non "Key" No.)



SPINNING REEL COASTAL2500-3000-3500-4000



Key No.	COASTAL2500 Parts No.	Parts Name	COASTAL3000 Parts No.	COASTAL3500 Parts No.	COASTAL4000 Parts No.
1	H22-2101	Drag Knob	H22-2101	H22-0301	H22-0301
2	F71-0001	Drag Washer Retainer	F71-0001	F71-0001	F71-0001
3	F89-5304	Drag Knob Click Plate	F89-5304	F89-5302	F89-5302
4	F69-1001	Drag Washer	F69-1001	F62-7101	F62-7101
5	F62-7301	Eared Washer	F62-7301	F62-7301	F62-7301
6	F62-7201	Key Washer	F62-7201	F64-4701	F64-4701
2-7	H22-1801	Spool Assembly	H21-9201	H22-0001	H22-0401
8	G47-2401	Collar Retainer	G47-2401	G52-5101	G52-5101
9	G52-2701	Ball Bearing (A)	G52-2701	G43-1002	G43-1002
10	F62-5500	Washer (A)	F62-5500	F64-3500	F64-3500
11	G69-3901	Click Leaf Spring Holder	G47-2201	G69-4001	G69-4001
12	F70-4901	Spool Click Leaf Spring	F70-4901	F70-9002	F70-9002
13	-	Washer (B)	G46-8000	-	-
14	G62-7901	Spool Metal	G62-8801	G64-2301	G64-2301
15	G37-5001	Pin	G37-5001	F64-3601	F64-3601
16	H22-1401	Main Shaft	H22-0801	H22-0901	H22-0901
17	G69-9801	Rotor Nut	G69-9801	G74-3801	G74-3801
18	G69-9701	Collar (A)	G69-9701	G75-1201	G75-1201
19	G61-2010	Rotor	G62-8309	G64-6106	G64-6106
20	G62-7701	Screw (A)	G62-7701	G62-7701	G62-7701
21	G19-5602	Screw (B)	G19-5602	G19-5602	G19-5602
22	G61-2310	Bail Arm	G61-2310	G61-2310	G61-2310
23	G20-5001	Screw (C)	G20-5001	G20-5001	G20-5001
24	G19-5501	Collar (B)	G19-5501	G19-5501	G19-5501
25	G22-0701	Collar (C)	G22-0701	G22-0701	G22-0701
26	F92-1601	Line Roller	F92-1601	F92-1601	F92-1601
27	G04-7601	Collar (D)	G04-7601	G04-7601	G04-7601
28	G61-2701	Bail Assembly	G62-8501	G64-6401	G64-6401
29	G47-1801	Bail Spring Shaft	G47-1801	G29-8201	G29-8201
30	E31-3901	Washer (C)	E31-3901	E31-3901	E31-3901
31	G47-1701	Bail Spring	G47-1701	G64-6201	G64-6201
32	G61-2101	Bail Spring Holder	G61-2101	G61-2103	G61-2103
33	G61-2501	Cover (A)	G62-8401	G64-6301	G64-6301
34	G27-0801	Screw (D)	G27-0801	G27-0801	G27-0801
35	G61-3101	Bail Trip Lever Spring	G61-3101	G61-3101	G61-3101
36	G61-3001	Bail Trip Lever	G62-8601	G64-6501	G64-6501
37	G61-3201	Cover (B)	G62-8701	G64-6801	G64-6801
38	G61-1201	Roller Clutch Retainer	G61-1201	G57-7401	G57-7401
39	G55-7101	Screw (E)	G55-7101	G55-7101	G55-7101
40	G46-5401	Clutch Cam Retainer	G46-5401	F64-1501	F64-1501
41	-	Clutch Cam	-	F64-1401	F64-1401
42	G53-9201	Roller Clutch	G53-9201	G31-4501	G31-4501
43	G71-6201	Spacing Sleeve	G71-6201	G74-3001	G74-3001
44	G46-7402	Bearing Retainer (A)	G46-7402	G52-2901	G52-2901
45	G55-7101	Screw (F)	G55-7101	E13-4509	E13-4509
46	375-8509	Washer (D)	375-8509	-	-
47	G53-5101	Ball Bearing (B)	G53-5101	G52-2801	G52-2801
48	H22-1501	Pinion Gear	H22-1501	H21-9701	H21-9701
49	G69-8201	Body	G69-8201	H21-9501	H21-9501
50	G69-8601	Anti-Reverse Cam	G69-8601	G74-2601	G74-2601
51	G69-9402	Anti-Reverse Lever	G69-9402	G69-9402	G69-9402
52	G69-9501	Screw (G)	G69-9501	G69-9501	G69-9501
53	G72-6201	Anti-Reverse Cam Spring	G72-6201	G72-6201	G72-6201
54	G69-9301	Rear Cover	G69-9301	G74-3501	G74-3501
55	G33-2704	Screw (H)	G33-2704	G33-2704	G33-2704
56	G61-0802	Stabilizer Bar	G61-0802	G64-4702	G64-4702
57	H22-1301	Oscillating Gear	H21-9101	H21-9601	H21-9601
58	G46-6001	"O" ring (A)	G46-6001	B85-3101	B85-3101
59	G46-6100	Washer (E)	G46-6100	G52-2100	G52-2100
60	G46-6201	Ball Bearing (C)	G46-6201	G46-7101	G46-7101
61	F20-6902	Screw (I)	F20-6902	B70-3401	B70-3401
62	G67-0501	"O" ring (B)	G67-0501	G64-5301	G64-5301
63	H22-1601	Drive Gear	H22-1601	H21-9801	H21-9801
64	375-8500	Washer (F)	375-8500	373-7800	373-7800
65	G46-7301	Ball Bearing (D)	G46-7301	G52-3403	G52-3403
66	G69-9101	Side Cover	G69-9101	G74-3301	G74-3301
67	G33-2904	Screw (J)	G33-2904	G33-2904	G33-2904
68	H22-1701	Handle Assembly	H22-1701	H21-9901	H21-9901
69	E11-9602	Screw (K)	E11-9602	E11-9602	E11-9602
70	G52-2701	Ball Bearing (E)	G52-2701	G43-1002	G43-1002
71	G47-2401	Bearing Retainer (B)	G47-2401	G52-5101	G52-5101
72	F72-1001	Collar (E)	F72-1001	F72-1202	F72-1202
73	160-8101	Washer (G)	160-8101	160-8101	160-8101
74	G70-0201	Handle Screw	G70-0201	G74-4201	G74-4201