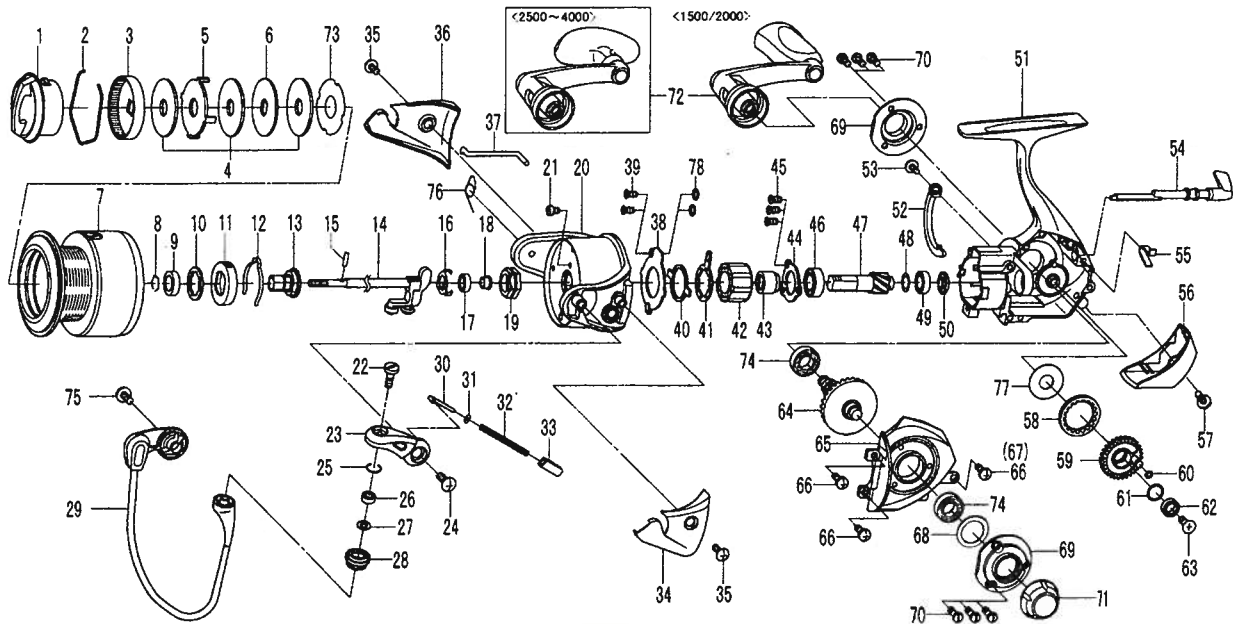


Certate 2500



Key No.	Parts No.	Parts Name	Key No.	Parts No.	Parts Name
1	G46-9901	DRAG KNOB	39	G55-7101	BEARING RET C SCREW
2	F71-0001	DRAG WASHER RET	40	G46-5401	CLUTCH CAM RET
3	F89-5304	DRAG KNOB CLICK PLT	41	F89-6801	CLUTCH CAM
4	F69-1001	DRAG WASHER	42	G22-0603	ROLLER CLUTCH
5	F62-7301	EARED WASHER	43	G46-7501	SPACING SLEEVE
6	F62-7201	KEY WASHER	44	G46-7401	BEARING RET C
2-7	G59-0501	SPOOL	45	E13-4509	BEARING RET B SCREW
8	G47-2401	SPOOL RET	46	G53-5101	BALL BEARING C
9	G09-5801	SPOOL COLLAR	47&64	Z01-7331	PINION, DRIVE GEAR SET
10	F62-5500	SPOOL WASHER	48	G57-2501	PINION WASHER
11	G47-2201	CLICK LEAF SPRING HOLDER	49	G46-7101	BALL BEARING D
12	F70-4901	SPOOL CLICK LEAF SPRING	50	G46-7001	BALL BEARING COLLAR B
13	G47-2101	SPOOL METAL	51	G49-2901	BODY
14	G46-6401	MAIN SHAFT	52	G47-2001	A/R PLT
15	G37-5001	PIN	53	G40-0101	A/R PLT SCREW
16	G47-1501	BEARING RET A	54	G46-5601	A/R LEVER
17	G46-6201	BALL BEARING A	55	G46-5501	A/R CAM SPRING
18	G47-1201	BALL BEARING COLLAR A	56	G46-8501	REAR COVER
19	G47-1301	ROTOR NUT	57	F89-2701	REAR COVER SCREW
20	G47-0301	ROTOR	58	G46-5901	O RING B
21	E49-2001	ROTOR NUT LOCK SCREW	59	G46-5801	OSC GEAR
22	F92-1702	LINE ROLLER SCREW	60	G46-6001	O RING C
23	F89-2227	BAIL ARM	61	G46-6100	OSC GEAR WASHER A
24	351-7701	BAIL ARM SCREW	62	G46-6202	BALL BEARING E
25	G47-1101	O RING A	63	G46-6301	OSC GEAR SCREW
26	G28-1601	BALL BEARING B	65	G46-8201	SIDE COVER
27	F89-7101	LINE ROLLER WASHER	66	G46-8301	SIDE COVER SCREW
28	G47-0901	LINE ROLLER	68	G46-8000	SIDE RING WASHER
29	G47-0501	BAIL	69	G46-8101	SIDE RING
30	G47-1801	BAIL SPRING SHAFT	70	F62-3304	SIDE RING SCREW
31	E31-3901	BAIL SPRING WASHER	71	G46-9401	HANDLE SCREW
32	G47-1701	BAIL SPRING	72	G46-8601	HANDLE
33	G47-1601	BAIL SPRING HOLDER	74	G46-7302	BALL BEARING F
34	G47-0401	BAIL SPRING COVER	75	351-7707	BAIL HOLDER SCREW
35	G33-2702	BAIL SPRING COVER SCREW	76	G58-5501	BAIL HOLDER SPRING
36	G47-0801	BAIL HOLDER COVER	77	F76-7703	OSC GEAR WASHER B
37	G47-1901	BAIL TRIP LEVER	78	375-4101	BEARING RET A WASHER
38	G46-7601	BEARING RET B			