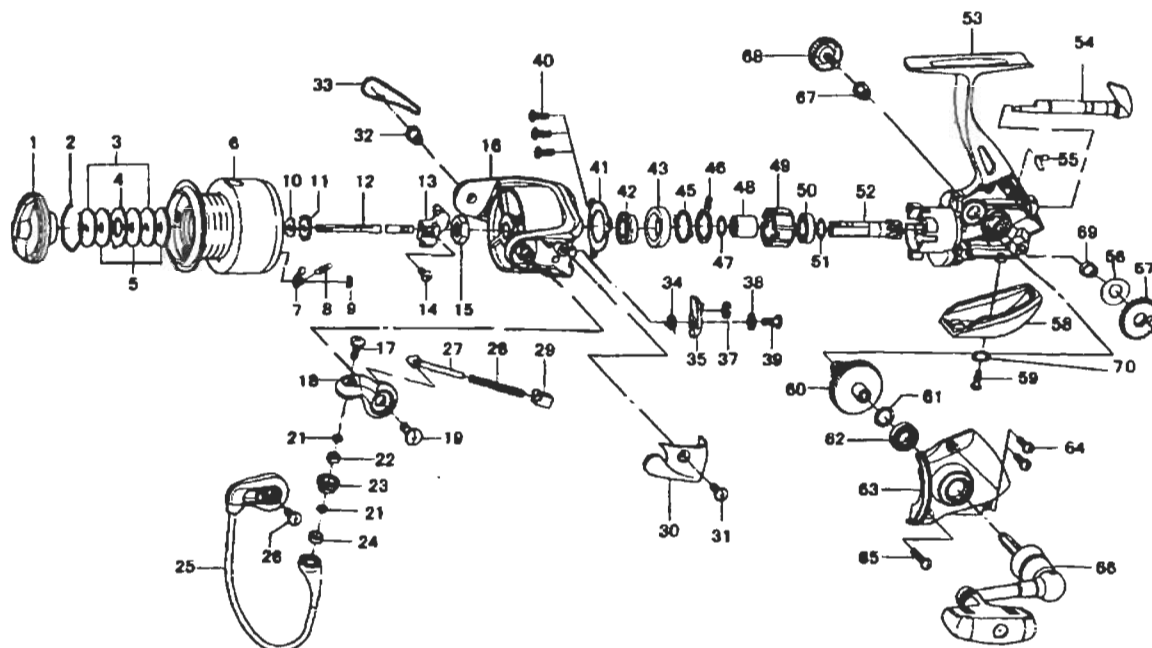


# CAPRICORN 3500 / 4000



| Key No. | Parts No. | Parts Name              | Key No. | Parts No. | Parts Name            |
|---------|-----------|-------------------------|---------|-----------|-----------------------|
| 1       | G25-5501  | DRAG KNOB               | 39      | G19-3701  | BAIL TRIP LEVER SCREW |
| 2       | F37-3301  | DRAG WASHER RET         | 40      | 352-2501  | BEARING RET SCREW     |
| 3       | F09-4901  | KEY WASHER              | 41      | G22-9901  | BEARING RET           |
| 4       | 373-3603  | EARED WASHER            | 42      | F25-2901  | BALL BEARING B        |
| 5       | E13-6001  | DRAG WASHER             | 43      | F92-0602  | BALL BEARING COLLAR   |
| 2-9     | G25-5301  | SPOOL                   | 45      | F64-1501  | CLUTCH CAM RET        |
| 2-9     | G28-0201  | SPOOL (EXTRA)           | 46      | F64-1401  | CLUTCH CAM            |
| 7       | B07-5304  | CLICK PAWL              | 47      | 373-7814  | CLUTCH CAM WASHER     |
| 8       | E40-3101  | CLICK SPRING            | 48      | F73-2203  | SPACING SLEEVE        |
| 9       | 320-5901  | CLICK RET               | 49      | G31-4501  | ROLLER CLUTCH         |
| 10      | F09-4701  | SPOOL WASHER            | 50      | F64-1101  | BALL BEARING C        |
| 11      | E46-2701  | CLICK GEAR              | 51      | 373-7814  | PINION GEAR WASHER    |
| 12      | G29-1601  | MAIN SHAFT              | 52      | G29-1301  | PINION GEAR           |
| 13      | G02-5501  | OSC SLIDER              | 53      | G25-4901  | BODY                  |
| 14      | 352-1505  | OSC SLIDER SCREW        | 54      | G19-3103  | A/R LEVER             |
| 15      | G12-3301  | ROTOR NUT               | 55      | G19-3301  | A/R CAM SPRING        |
| 16      | G23-0203  | ROTOR                   | 56      | G13-1700  | OSC GEAR WASHER       |
| 17      | G19-5601  | LINE ROLLER SCREW       | 57      | F74-7801  | OSC GEAR              |
| 18      | G19-4501  | BAIL ARM                | 58      | G23-0102  | REAR COVER            |
| 19      | G22-4901  | BAIL ARM SCREW          | 59      | F50-5701  | REAR COVER SCREW      |
| 21      | F89-7101  | LINE ROLLER WASHER      | 60      | G02-5601  | DRIVE GEAR            |
| 22      | G02-0801  | BALL BEARING A          | 61      | 373-7808  | DRIVE GEAR WASHER     |
| 23      | F92-1601  | LINE ROLLER             | 62      | 631-6901  | BALL BEARING D        |
| 24      | G04-7601  | LINE ROLLER COLLAR      | 63      | G23-0003  | SIDE COVER            |
| 25      | G23-0401  | BAIL                    | 64      | 351-1106  | SIDE COVER SCREW A    |
| 26      | 351-6101  | BAIL HOLDER SCREW       | 65      | G25-9101  | SIDE COVER SCREW B    |
| 27      | G01-7502  | BAIL SPRING SHAFT       | 66      | G25-5001  | HANDLE                |
| 28      | G14-8601  | BAIL SPRING             | 67      | F72-1201  | HANDLE COLLAR         |
| 29      | G01-7401  | BAIL SPRING HOLDER      | 68      | F42-5802  | HANDLE SCREW          |
| 30      | G23-0301  | BAIL SPRING COVER       | 69      | F13-1601  | OSC GEAR COLLAR       |
| 31      | G20-5101  | BAIL SPRING COVER SCREW | 70      | G25-6401  | REAR COVER WASHER     |
| 32      | G19-5101  | BAIL HOLDER NUT         |         |           |                       |
| 33      | G23-0601  | BAIL HOLDER COVER       |         |           |                       |
| 34      | G19-4101  | BAIL TRIP LEVER SPRING  |         |           |                       |
| 35      | G26-5402  | BAIL TRIP LEVER         |         |           |                       |
| 37      | G19-4301  | BRAKE SHOE              |         |           |                       |
| 38      | 375-3002  | BAIL TRIP LEVER WASHER  |         |           |                       |

**CA4000 SPECIAL PARTS**

| Key No. | Parts No. | Parts Name    |
|---------|-----------|---------------|
| 2-9     | G25-6001  | SPOOL         |
| 2-9     | G28-0401  | SPOOL (EXTRA) |