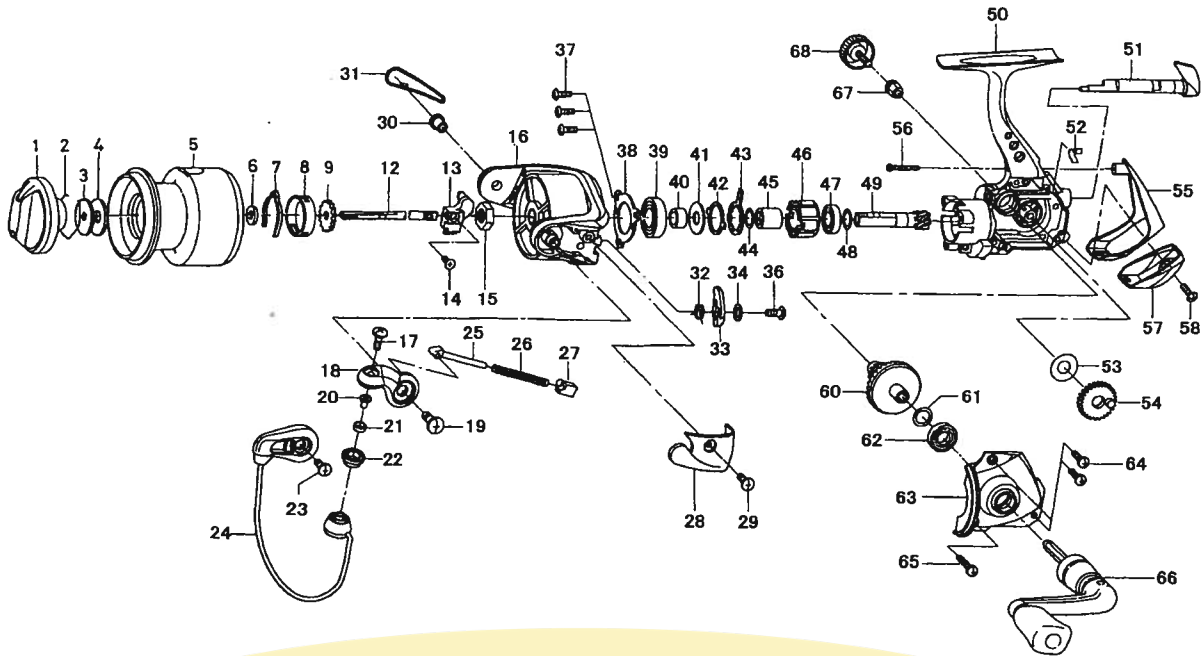


**CAPRICE 1500 / 2000**



| Key No. | Parts No. | Parts Name               | Key No. | Parts No. | Parts Name          |
|---------|-----------|--------------------------|---------|-----------|---------------------|
| 1       | G36-9701  | DRAG KNOB                | 38      | G19-3601  | BEARING RET         |
| 2       | F37-3301  | DRAG WASHER RET          | 39      | G33-2601  | BALL BEARING A      |
| 3       | E46-7201  | KEY WASHER               | 40      | G19-3501  | BALL BEARING COLLAR |
| 4       | E13-6001  | DRAG WASHER              | 41      | B27-5403  | BALL BEARING WASHER |
| 2-5     | G36-9501  | SPOOL                    | 42      | F62-2301  | CLUTCH CAM RET      |
| 6       | E46-7101  | SPOOL WASHER             | 43      | F62-2201  | CLUTCH CAM          |
| 7       | F70-4901  | SPOOL CLICK LEAF SPRING  | 44      | 375-8502  | CLUTCH CAM WASHER   |
| 8       | E12-2308  | CLICK LEAF SPRING HOLDER | 45      | F73-2501  | SPACING SLEEVE      |
| 9       | F81-1501  | CLICK GEAR               | 46      | G22-0601  | ROLLER CLUTCH       |
| 12      | G20-5901  | MAIN SHAFT               | 47      | G28-5801  | BALL BEARING B      |
| 13      | G06-1601  | OSC SLIDER               | 48      | 375-8504  | PINION WASHER       |
| 14      | 351-0315  | OSC SLIDER SCREW         | 49      | G06-1401  | PINION GEAR         |
| 15      | F33-6102  | ROTOR NUT                | 50      | G36-9301  | BODY                |
| 16      | G20-6207  | ROTOR                    | 51      | G19-3112  | A/R LEVER           |
| 17      | G01-8601  | LINE ROLLER SCREW        | 52      | G19-3301  | A/R CAM SPRING      |
| 18      | G20-6404  | BAIL ARM                 | 53      | G11-4300  | OSC GEAR WASHER     |
| 19      | G22-4901  | BAIL ARM SCREW           | 54      | F69-1702  | OSC GEAR            |
| 20      | G15-2501  | LINE ROLLER COLLAR       | 55      | G36-7702  | REAR COVER A        |
| 21      | G17-3801  | LINE ROLLER BUSHING      | 56      | E11-9602  | REAR COVER SCREW A  |
| 22      | F62-5001  | LINE ROLLER              | 57      | G36-7801  | REAR COVER B        |
| 23      | 351-6101  | BAIL HOLDER SCREW        | 58      | G33-2701  | REAR COVER SCREW B  |
| 24      | G36-8002  | BAIL                     | 60      | G06-1701  | DRIVE GEAR          |
| 25      | G01-7503  | BAIL SPRING SHAFT        | 61      | 375-8500  | DRIVE GEAR WASHER   |
| 26      | G06-2401  | BAIL SPRING              | 62      | G28-5801  | BALL BEARING C      |
| 27      | G01-7401  | BAIL SPRING HOLDER       | 63      | G36-7604  | SIDE COVER          |
| 28      | G20-6502  | BAIL SPRING COVER        | 64      | G33-2902  | SIDE COVER SCREW A  |
| 29      | G20-5101  | BAIL SPRING COVER SCREW  | 65      | G33-3002  | SIDE COVER SCREW B  |
| 30      | G19-5101  | BAIL HOLDER NUT          | 66      | G36-9401  | HANDLE              |
| 31      | G36-8301  | BAIL HOLDER COVER        | 67      | F72-1001  | HANDLE COLLAR       |
| 32      | G47-3901  | BAIL TRIP LEVER SPRING   | 68      | F67-6509  | HANDLE SCREW        |
| 33      | G26-5801  | BAIL TRIP LEVER          |         |           |                     |
| 34      | 373-3003  | BAIL TRIP LEVER WASHER   |         |           |                     |
| 36      | G19-3701  | BAIL TRIP LEVER SCREW    |         |           |                     |
| 37      | G33-2701  | BEARING RET SCREW        |         |           |                     |

**SPECIAL PART FOR CP2000**

| Key No. | Parts No. | Parts Name |
|---------|-----------|------------|
| 2-5     | G37-0201  | SPOOL      |