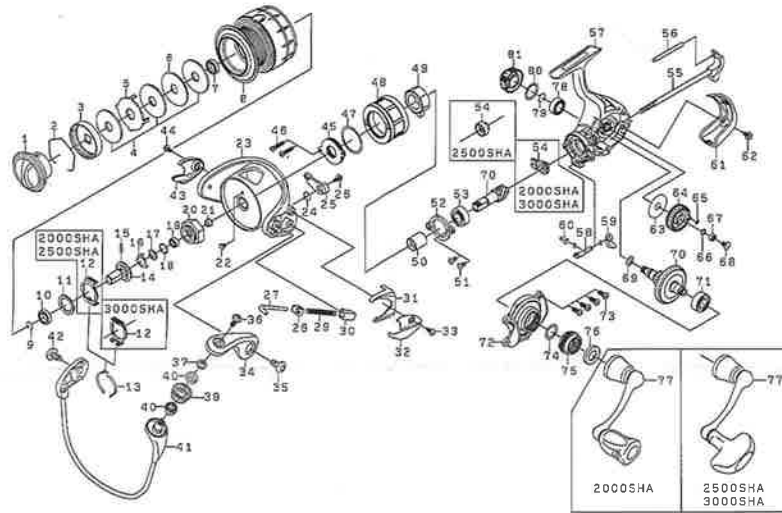


CALDIA 2000SHA/2500SHA/3000SHA



Key No.	CALDIA 2000SHA Parts No.	Parts Name	Désignation des pièces	CALDIA 2500SHA Parts No.	CALDIA 3000SHA Parts No.
1	6H965001	Drag Knob	Bouton de réglage du frein	6H965601	6H965601
2	6F742501	Drag Washer Retainer	Clips de rondelle de frein	6F710001	6F710001
3	6F908701	Drag Knob Click Plate	Hauteur bruiteur de coton de réglage du frein de bobine	6F895301	6F895301
4	6F635001	Drag Washer	Rondelle de frein	6F691001	6F691001
5	6F635201	Eared Washer	Rondelle à oreilles	6F627301	6F627301
6	6F635101	Key Washer	Rondelle fixe	6F627201	6F627201
7	6G818902	Ball Bearing (A)	Roulement à billes (A)	6G818902	6G818902
2~8	6H964701	Spool Assembly	Bobine complète	6H965301	6H966101
9	6G472401	Collar Retainer	Collier de maintien	6G472401	6G472401
10	6G818902	Ball Bearing (B)	Roulement à billes (B)	6G818902	6G818902
11	6F625500	Washer (A)	Rondelle (A)	6F625500	6F625500
12	6H416001	Click Leaf Spring Holder	Support de ressort de réglage du cliquet	6H416001	6H416001
13	6H883701	Spool Click Leaf Spring	Ressort de réglage de bobine	6H883701	6H883701
14	6H601301	Spool Metal	Douille de bobine	6H601301	6H615001
15	6G375001	Pin	Clavette	6G375001	6G375001
16	6H415801	Bearing Retainer (A)	Rondelle de retenue du roulement à billes (A)	6H415801	6H415801
17	6H415701	Packing (A)	Emballage (A)	6H415701	6H416201
18	6G466103	Washer (B)	Rondelle (B)	6G466103	6G466103
19	6G466201	Ball Bearing (C)	Roulement à billes (C)	6G466201	6G466201
20	6H444501	Rotor Nut	Ecrou de cloche	6H705201	6H705201
21	6H806001	Collar (A)	Collier (A)	6H806001	6H806101
22	6H022701	Screw (A)	Vis (A)	6H022701	6H022701
23	6H802109	Rotor	Cloche	6H802006	6H802210
24	6H443301	Bail Trip Lever Spring	Ressort du levier de déclenchement	6H413601	6H413601
25	6H443401	Bail Trip Lever	Levier de déclenchement	6H413701	6H460301
26	6H417701	Screw (B)	Vis (B)	6H417701	6H417701
27	6H443601	Bail Spring Shaft	Axe de ressort de pick-up	6H414101	6H572001
28	6H576101	Bail Spring Plate	Plaque de ressort de pick-up	6H576101	6H576101
29	6H442401	Bail Spring	Ressort de pick-up	6H545701	6H414201
30	6H414301	Bail Spring Holder	Support ressort de pick-up	6H414301	6H414301
31	6H443710	Cover (C)	Couvercle (C)	6H414010	6H460512
32	6H443802	Cover (A)	Couvercle (A)	6H414602	6H460602
33	6H431301	Screw (C)	Vis (C)	6H431301	6H431301
34	6H414408	Bail Arm	Bras de pick-up	6H414408	6H533809
35	6H431201	Screw (D)	Vis (D)	6H431201	6H431201
36	6H697701	Screw (E)	Vis (E)	6H697701	6H697701
37	6H415401	Collar (B)	Collier (B)	6H415401	6H415401
39	6G686702	Line Roller	Galet de pick-up	6G686702	6G686702
40	6H801801	Collar (C)	Collier (C)	6H801801	6H801801
41	6H687801	Bail Assembly	Ensemble Arceau du pick-up	6H687901	6H688001
42	6H431201	Screw (F)	Vis (F)	6H431201	6H431201
43	6H444302	Cover (B)	Couvercle (B)	6H415102	6H461002
44	6H431301	Screw (G)	Vis (G)	6H431301	6H431301
45	6H532602	Magnet Assembly	Support d'aimant	6H532602	6H532602
46	6H596501	Screw (H)	Vis (H)	6H596501	6H596501
47	6H413001	"O" Ring (A)	Anneau torique (A)	6H413001	6H413001
48	6H609309	Cover (D)	Couvercle (D)	6H609309	6H609309
49	6H412601	Roller Clutch	Roulement à aiguilles	6H412601	6H412601
50	6H615501	Spacing Sleeve	Manchon	6H615501	6H615501
51	6G997301	Screw (I)	Vis (I)	6G997301	6G997301
52	6H442201	Bearing Retainer (B)	Rondelle de retenue du roulement à billes (B)	6H442201	6H411501
53	6G467305	Ball Bearing (D)	Roulement à billes (D)	6G467305	6G535105
54	6H596401	Collar (D)	Collier (D)	6H715701	6H614401
55	6H629201	Main Shaft	Axe principal	6H596001	6H614001
56	6H596301	Stabilizer Bar	Entretoise	6H596301	6H614301
57	6H964201	Body	Bâti	6H965101	6H965701
58	6H595501	Anti-Reverse Cam	Camé du cliquet anti-retour	6H595501	6H595501
59	6H595404	Anti-Reverse Lever	Commande de l'anti-retour	6H595404	6H595404
60	6H697801	Anti-Reverse Cam Spring	Ressort de camé du cliquet anti-retour	6H697801	6H697801
61	6H598101	Rear Cover	Couvercle arrière	6H598101	6H615401
62	6H598201	Screw (J)	Vis (J)	6H598201	6H598201
63	6H595701	Washer (C)	Rondelle (C)	6H595701	6H595701
64	6H768401	Oscillating Gear	Roue d'oscillation	6H727901	6H613901
65	6H770601	"O" Ring (B)	Anneau torique (B)	6H770601	6G466001
66	6H129200	Washer (D)	Rondelle (D)	6H129200	6H129200
67	6G469007	Ball Bearing (E)	Roulement à billes (E)	6G469007	6G469007
68	6G997001	Screw (K)	Vis (K)	6G997001	6G997001
69	6G670501	"O" Ring (C)	Anneau torique (C)	6G670501	6G670501
70	62021196	Pinion Gear + Drive Gear	Pignon + roue de commande	62020631	62020652
71	6G467305	Ball Bearing (F)	Roulement à billes (F)	6G467305	6G467305
72	6H964501	Side Cover	Couvercle	6H964501	6H966001
73	6H597701	Screw (L)	Vis (L)	6H597701	6H597701
74	6G613400	Washer (E)	Rondelle (E)	6G613400	6G613400
75	6H597802	Screw (M)	Vis (M)	6H597802	6H597802
76	6H705101	Packing (B)	Emballage (B)	6H705101	6H705101
77	6H964601	Handle Assembly	Manivelle	6H965201	6H965201
78	6G522701	Ball Bearing (G)	Roulement à billes (G)	6G522701	6G522701
79	6G472401	Bearing Retainer (C)	Rondelle de retenue du roulement à billes (C)	6G472401	6G472401
80	6G162401	"O" Ring (D)	Anneau torique (D)	6G162401	6G162401
81	6H705701	Handle Screw Cap	Bouchon obturateur	6H705701	6H705701